

KING GEORGE'S FIELD CHARITY BOARD

Tuesday, 6 March 2018 at 5.30 p.m.

Room C1, 1st Floor, Town Hall, Mulberry Place, 5 Clove Crescent,
London, E14 2BG

The meeting is open to the public to attend.

Members:

Mayor John Biggs	(Executive Mayor)
Councillor Amina Ali	(Cabinet Member for Environment)
Councillor Asma Begum	(Cabinet Member for Community Safety)
Councillor Rachel Blake	(Cabinet Member for Strategic Development & Waste)
Councillor David Edgar	(Cabinet Member for Resources)
Councillor Sirajul Islam	(Statutory Deputy Mayor and Cabinet Member for Housing)
Councillor Denise Jones	(Cabinet Member for Health & Adult Services)
Councillor Abdul Mukit MBE	(Cabinet Member for Culture and Youth)
Councillor Joshua Peck	(Cabinet Member for Work & Economic Growth)
Councillor Amy Whitelock Gibbs	(Cabinet Member for Education and Children's Services)

[The quorum for this body is 3 Members]

Contact for further enquiries:

Joel West, Democratic Services,
1st Floor, Town Hall, Mulberry Place, 5 Clove Crescent, E14 2BG
Tel: 020 7364 4207
E-mail: joel.west@towerhamlets.gov.uk
Web:

Scan this code for an
electronic agenda:



Public Information

Attendance at meetings.

The public are welcome to attend meetings of the Committee. However seating is limited and offered on a first come first served basis.

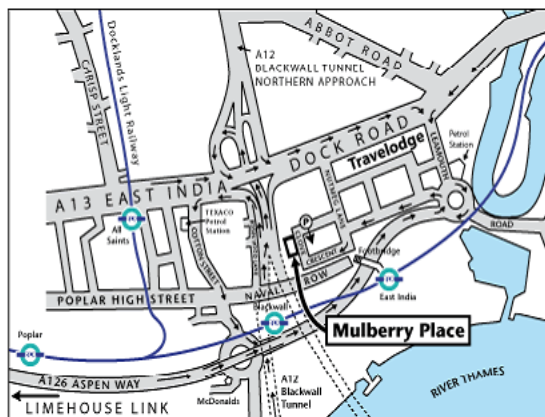
Audio/Visual recording of meetings.

Should you wish to film the meeting, please contact the Committee Officer shown on the agenda front page.

Mobile telephones

Please switch your mobile telephone on to silent mode whilst in the meeting.

Access information for the Town Hall, Mulberry Place.



Bus: Routes: D3, D6, D7, D8, 15, 108, and 115 all stop near the Town Hall.

Docklands Light Railway: Nearest stations are East India: Head across the bridge and then through the complex to the Town Hall, Mulberry Place
Blackwall station: Across the bus station then turn right to the back of the Town Hall complex, through the gates and archway to the Town Hall.

Tube: The closest tube stations are Canning Town and Canary Wharf.

Car Parking: There is limited visitor pay and display parking at the Town Hall (free from 6pm)

If you are viewing this on line: (http://www.towerhamlets.gov.uk/content_pages/contact_us.aspx)

Meeting access/special requirements.

The Town Hall is accessible to people with special needs. There are accessible toilets, lifts to venues. Disabled parking bays and an induction loop system for people with hearing difficulties are available. Documents can be made available in large print, Braille or audio version. For further information, contact the Officers shown on the front of the agenda.



Fire alarm

If the fire alarm sounds please leave the building immediately by the nearest available fire exit without deviating to collect belongings. Fire wardens will direct you to the exits and fire assembly point. If you are unable to use the stairs, a member of staff will direct you to a safe area. The meeting will reconvene if it is safe to do so, or else it will stand adjourned.

Electronic agendas reports, minutes and film recordings.

Copies of agendas, reports and minutes for council meetings and links to filmed webcasts can also be found on our website from day of publication.

To access this, click www.towerhamlets.gov.uk/committee and search for the relevant committee and meeting date.

Agendas are available at the Town Hall, Libraries, Idea Centres and One Stop Shops and on the Mod.Gov, iPad and Android apps.



QR code for smart phone users

A Guide to KING GEORGE'S FIELD CHARITY BOARD

Decision Making at Tower Hamlets

As Tower Hamlets operates the Directly Elected Mayor system, **Mayor John Biggs** holds Executive powers and takes decisions at Cabinet or through Individual Mayoral Decisions. The Mayor has also appointed this Board to administer the affairs of two charities of which the Council is sole trustee. Membership of the Board is set out on the front page of this agenda.

Which decisions are taken by King George's Field Charity Board?

The Board administers the affairs of the King George's Field, Mile End charity, and the King George's Field – Stepney (Tredegar Square, Bow) charity and discharges all duties of the Council as sole trustee of these Charities. Decisions on these matters are executive decisions and so are treated much in the same way as decisions of the Mayor.

The Board may also take Key Decisions. The constitution describes Key Decisions as an executive decision which is likely

- a) to result in the local authority incurring expenditure which is, or the making of savings which are, significant having regard to the local authority's budget for the service or function to which the decision relates; or
- b) to be significant in terms of its effects on communities living or working in an area comprising two or more wards in the borough.

Upcoming Key Decisions are published on the website on the 'Forthcoming Decisions' page through www.towerhamlets.gov.uk/committee

Published Decisions and Call-Ins

Once the meeting decisions have been published, any 5 Councillors may submit a Call-In to the Service Head, Democratic Services requesting that a decision be reviewed. This halts the decision until it has been reconsidered.

- The decisions will be published on: **Thursday, 8 March 2018**
- The deadline for call-ins is: **Thursday, 15 March 2018**

Any Call-Ins will be considered at the next meeting of the Overview and Scrutiny Committee. The Committee can reject the call-in or they can agree it and refer the decision back to the Mayor, with their recommendations, for his final consideration.

Public Engagement at King George's Field Charity Board

The main focus of King George's Field Charity Board is as a decision-making body. However there is an opportunity for the public to contribute through making submissions that specifically relate to the reports set out on the agenda.

Members of the public may make written submissions in any form (for example; Petitions, letters, written questions) to the Clerk to King George's Field Charity Board (details on the front page) by 5 pm the day before the meeting.

APOLOGIES FOR ABSENCE

1. DECLARATIONS OF DISCLOSABLE PECUNIARY INTERESTS 5 - 8

To note any declarations of interest made by Members, including those restricting Members from voting on the questions detailed in Section 106 of the Local Government Finance Act, 1992.

See attached note from the Monitoring Officer.

2. MINUTES OF THE PREVIOUS MEETING 9 - 12

To confirm as a correct record the minutes of the meeting of the Board held on 9 January 2018.

	PAGE NUMBER	WARD(S) AFFECTED
3. UNRESTRICTED REPORTS FOR CONSIDERATION		
3.1 Crossrail Stepney Green Land Transfer and Landscape Reinstatement	13 - 24	St Dunstan's; Stepney Green
3.2 Update on Mile End Park - March 2018	25 - 136	Bow West; Mile End
4. ANY OTHER BUSINESS WHICH THE CHAIR CONSIDERS TO BE URGENT		

Agenda Item 1

DECLARATIONS OF INTERESTS - NOTE FROM THE MONITORING OFFICER

This note is for guidance only. For further details please consult the Members' Code of Conduct at Part 5.1 of the Council's Constitution.

Please note that the question of whether a Member has an interest in any matter, and whether or not that interest is a Disclosable Pecuniary Interest, is for that Member to decide. Advice is available from officers as listed below but they cannot make the decision for the Member. If in doubt as to the nature of an interest it is advisable to seek advice **prior** to attending a meeting.

Interests and Disclosable Pecuniary Interests (DPIs)

You have an interest in any business of the authority where that business relates to or is likely to affect any of the persons, bodies or matters listed in section 4.1 (a) of the Code of Conduct; and might reasonably be regarded as affecting the well-being or financial position of yourself, a member of your family or a person with whom you have a close association, to a greater extent than the majority of other council tax payers, ratepayers or inhabitants of the ward affected.

You must notify the Monitoring Officer in writing of any such interest, for inclusion in the Register of Members' Interests which is available for public inspection and on the Council's Website.

Once you have recorded an interest in the Register, you are not then required to declare that interest at each meeting where the business is discussed, unless the interest is a Disclosable Pecuniary Interest (DPI).

A DPI is defined in Regulations as a pecuniary interest of any of the descriptions listed at **Appendix A** overleaf. Please note that a Member's DPIs include his/her own relevant interests and also those of his/her spouse or civil partner; or a person with whom the Member is living as husband and wife; or a person with whom the Member is living as if they were civil partners; if the Member is aware that that other person has the interest.

Effect of a Disclosable Pecuniary Interest on participation at meetings

Where you have a DPI in any business of the Council you must, unless you have obtained a dispensation from the authority's Monitoring Officer following consideration by the Dispensations Sub-Committee of the Standards Advisory Committee:-

- not seek to improperly influence a decision about that business; and
- not exercise executive functions in relation to that business.

If you are present at a meeting where that business is discussed, you must:-

- Disclose to the meeting the existence and nature of the interest at the start of the meeting or when the interest becomes apparent, if later; and
- Leave the room (including any public viewing area) for the duration of consideration and decision on the item and not seek to influence the debate or decision

When declaring a DPI, Members should specify the nature of the interest and the agenda item to which the interest relates. This procedure is designed to assist the public's understanding of the meeting and to enable a full record to be made in the minutes of the meeting.

Where you have a DPI in any business of the authority which is not included in the Member's register of interests and you attend a meeting of the authority at which the business is considered, in addition to disclosing the interest to that meeting, you must also within 28 days notify the Monitoring Officer of the interest for inclusion in the Register.

Further advice

For further advice please contact:-

Asmat Hussain, Corporate Director, Governance and Monitoring Officer – 020 7364 4800.

APPENDIX A: Definition of a Disclosable Pecuniary Interest

(Relevant Authorities (Disclosable Pecuniary Interests) Regulations 2012, Reg 2 and Schedule)

Subject	Prescribed description
Employment, office, trade, profession or vacation	Any employment, office, trade, profession or vocation carried on for profit or gain.
Sponsorship	<p>Any payment or provision of any other financial benefit (other than from the relevant authority) made or provided within the relevant period in respect of any expenses incurred by the Member in carrying out duties as a member, or towards the election expenses of the Member.</p> <p>This includes any payment or financial benefit from a trade union within the meaning of the Trade Union and Labour Relations (Consolidation) Act 1992.</p>
Contracts	<p>Any contract which is made between the relevant person (or a body in which the relevant person has a beneficial interest) and the relevant authority—</p> <p>(a) under which goods or services are to be provided or works are to be executed; and</p> <p>(b) which has not been fully discharged.</p>
Land	Any beneficial interest in land which is within the area of the relevant authority.
Licences	Any licence (alone or jointly with others) to occupy land in the area of the relevant authority for a month or longer.
Corporate tenancies	<p>Any tenancy where (to the Member's knowledge)—</p> <p>(a) the landlord is the relevant authority; and</p> <p>(b) the tenant is a body in which the relevant person has a beneficial interest.</p>
Securities	<p>Any beneficial interest in securities of a body where—</p> <p>(a) that body (to the Member's knowledge) has a place of business or land in the area of the relevant authority; and</p> <p>(b) either—</p> <p>(i) the total nominal value of the securities exceeds £25,000 or one hundredth of the total issued share capital of that body; or</p> <p>(ii) if the share capital of that body is of more than one class, the total nominal value of the shares of any one class in which the relevant person has a beneficial interest exceeds one hundredth of the total issued share capital of that class.</p>

This page is intentionally left blank

LONDON BOROUGH OF TOWER HAMLETS

MINUTES OF THE KING GEORGE'S FIELD CHARITY BOARD

HELD AT 6.20 P.M. ON TUESDAY, 9 JANUARY 2018

**C1, 1ST FLOOR, TOWN HALL, MULBERRY PLACE, 5 CLOVE CRESCENT,
LONDON, E14 2BG**

Members Present:

Councillor Sirajul Islam (Vice Chair, in the Chair)	(Statutory Deputy Mayor and Cabinet Member for Housing)
Councillor Rachel Blake	(Cabinet Member for Strategic Development & Waste)
Councillor David Edgar	(Cabinet Member for Resources)
Councillor Sirajul Islam	(Statutory Deputy Mayor and Cabinet Member for Housing)
Councillor Denise Jones	(Cabinet Member for Health & Adult Services)
Councillor Abdul Mukit MBE	(Cabinet Member for Culture and Youth)
Councillor Joshua Peck	(Cabinet Member for Work & Economic Growth)
Councillor Amy Whitelock Gibbs	(Cabinet Member for Education and Children's Services)

Apologies:

Mayor John Biggs	
Councillor Amina Ali	(Cabinet Member for Environment)
Councillor Asma Begum	(Cabinet Member for Community Safety)

Officers Present:

Stephen Adams	(Finance and Resources Manager)
Agnes Adrien	(Team Leader, Enforcement & Litigation, Legal Services)
Stephen Murray	(Head of Arts and Events)
Joel West	(Senior Democratic Services Officer)

1. DECLARATIONS OF DISCLOSABLE PECUNIARY INTERESTS

None were declared.

2. MINUTES OF THE PREVIOUS MEETING(S)

RESOLVED:

That the unrestricted minutes of the Board meeting held on 12 December 2017 be approved and signed by the Chair as a correct record of proceedings.

Matters Arising

Further to Minute 3.1 the Board:

1. Confirmed it would welcome a draft lettings policy to community organisations at Mile End Pavilions. The policy would potentially establish a second tier of fees applicable to community organisations such as the Friends of Mile End Park.
2. Received a legal briefing note and guidance document on the powers and duties of trustees of the King George's Field charities.

3. UNRESTRICTED REPORTS FOR CONSIDERATION

3.1 King George's Fields Charitable Trust Annual Report and Accounts, 2016/2017

Stephen Adams, Finance & Resources Manager, introduced the report, which provided details of the annual report and accounts of the King George's Field Mile End and King George's Field Tredegar Square charities for the 2016/2017 financial year.

The Board noted the increased expenditure incurred by the King George's Field Mile End charity in 2016/17 compared to the previous year and asked that management accounts are provided to each meeting to enable it to better identify areas of surplus/deficit in advance of annual accounts. Mr Adams indicated he would also provide the Board with the most recent monthly financial monitoring report prior to the next scheduled Board meeting.

The Board questioned why, as reported on page 22 of the agenda pack, the King George's Field Mile End charity's accounts are subject to the audit sign off of the Council's main accounts for 2016/17 and asked officers to explore whether the charity's accounts could be audited separately.

RESOLVED:

That the King George's Field Charity Board:

1. Approves the annual report and accounts for the King George's Field, Mile End Charity (registered number 1077859) for the 2016/2017 financial year set out in Appendix 1 of the report.
2. Approves the accounts for the King George's Field Tredegar Square charity (registered number 1088999) for the 2016/2017 financial year set out in Appendix 2 of the report.
3. Authorises the signing of the 2016/17 annual report and accounts for submission to the Charity Commission by 31st January 2018.


4. ANY OTHER BUSINESS WHICH THE CHAIR CONSIDERS TO BE URGENT

None.

The meeting ended at 6.39 p.m.

Chair, Mayor John Biggs
King George's Field Charity Board

This page is intentionally left blank

<p>King George’s Field Charity Board</p> <p>6th March 2018</p>	
<p>Report of: Ann Sutcliffe Interim Corporate Director, Place</p>	<p>Classification: Unrestricted</p>
<p>Granting of Lease to Stepney City Farm</p>	

Lead Member	Councillor Rachel Blake – Lead Member
Originating Officer(s)	Owen Whalley
Wards affected	St Dunstan’s and Stepney Green
Key Decision?	Yes/No
Community Plan Theme	

Executive Summary

Crossrail have been undertaking construction works for the new Elizabeth Line on the Trust Lands at Mile End Park and Stepney Green. The construction works at Mile End have been largely completed and the Park reinstated but at Stepney Green the works are programmed for completion in late summer. At that point the land will need to be reinstated in accordance with the Trust’s requirements and then transferred back to the Trust. The report provides a summary of the mitigation works already undertaken by Crossrail at Stepney Green, and that which are proposed to be undertaken later this year before the land is transferred back to the Trust.

However, decisions need to be made on proposals for the use of the land currently occupied by Crossrail before reinstatement works can be undertaken. The report seeks the Board’s agreement that the land to the west of Garden Street be reinstated as part of Stepney Green Park and land to the east of Garden Street be leased to Stepney City Farm Charity for use as an extension to the existing farm.

The Board should note that this land was occupied by the City Farm before Crossrail temporarily occupied the site.

Recommendations:

The Charity Board is recommended to:

1. Note the works already undertaken by Crossrail at Mile End Park and Stepney Green in mitigation for the permanent and temporary loss of land resulting from the construction of the Elizabeth Line
2. Agree that the land to the west of Garden Street be reinstated as part of Stepney Green Park as shown on Appendix 2

3. Agree that land to the east of Garden Street including the remains of the Baptist Chapel be leased to Stepney City Farm Charity for use as an extension to the existing farm
4. Authorise the Corporate Director, Governance to execute all necessary documents necessary to implement the above recommendations

1. REASONS FOR THE DECISIONS

- 1.1 Crossrail has now submitted a Landscape Restoration application for Stepney Green in accordance with Schedule 7 of the Crossrail Act which indicates detailed proposals for the land currently occupied by Crossrail including the reinstatement of Stepney Green Park and details of the materials for the shaft itself. These applications will need to be determined within the normal eight week timetable but the outstanding mitigation works at Stepney Green cannot commence until the shaft is completed and handed over to Transport for London. However, no detailed proposals have been submitted for the land east of Garden Street previously occupied by Stepney City Farm.

2. ALTERNATIVE OPTIONS

- 2.1 Alternative options for the use of the reinstated land at Stepney Green are the subject of this report and are discussed in detail in section 3.2. The other mitigation measures set out in the report, such as the reinstatement of Garden Street, are constrained to a large extent by the operational requirements of the Elizabeth Line. This includes the need to provide evacuation and emergency access to and from the shaft and need for servicing of the equipment located within the shaft.

3. DETAILS OF REPORT

3.1 Background

- 3.1.1 Construction works for the Crossrail Railway (the Elizabeth Line) has been taking place at various sites within the Borough for the past six years or more. There are two stations in the borough at Whitechapel and Canary Wharf and three Intervention Shafts at Stepney Green, Mile End Park and Eleanor Street/Willow Close Travellers Site which provide for emergency access and evacuation as well as ventilation. Within the borough the main construction works are programmed to end in the summer and the completed stations and structures then handed over to Transport for London. It is proposed that the services through the borough would begin in December 2019.
- 3.1.2 The shafts at Mile End Park and Stepney Green are located on land for which the Trust is responsible. Between 2009 and 2013 the Board received a series of reports which related primarily to the impact of the Crossrail construction

works on the Trust land and off site measures to mitigate those impacts. The mitigation discussed at these meetings of the Board was intended primarily to compensate primarily for the short term loss to the community of Trust land for construction work. The mitigation works were, therefore, generally implemented either before construction work commenced (e.g. Stepney City Farm) or in parallel (e.g. new changing rooms at Stepney Green football pitch).

3.1.3 In respect to the land required for both the permanent structures and construction works, the compulsory purchase powers authorised by the Crossrail Act were used to acquire the land. Thus, at the present time, Crossrail remains the freehold owner of all the land occupied for the construction works at Stepney Green and Mile End Park. Before returning the land to the landowner (King George's Field Trust) Crossrail are now required to reinstate the land to its original condition unless other agreed by the landowner.

3.1.4 **Stepney Green (see appendix 1)**

- **Impacts:** permanent loss of part of Stepney Green Park located between the boundary of the football pitch and Garden Street for the shaft, service area and emergency evacuation routes. Temporary loss of one third of land occupied by Stepney City Farm and use of part of Stepney Green Park for office accommodation and the temporary closure of Garden Street.
- **Mitigation:** construction of new changing rooms for the football pitch, relocation of children's play equipment, reconfiguration of Stepney City Farm, within the reduced site and construction of animal barn and workshops (all works completed). Future mitigation will include reconstruction of Garden Street on a new alignment, removal of all concrete hard standing on the construction work site and reinstatement of Stepney Green Park including replacement fencing, gates and footpath; construction of a new boundary fence enclosing the former Stepney City Farm site.

Crossrail has now submitted a Landscape Restoration application for Stepney Green in accordance with Schedule 7 of the Crossrail Act which indicates detailed proposals for the land currently occupied by Crossrail including the reinstatement of Stepney Green Park and Garden Street and details of the materials for the shaft itself. These applications will need to be determined within the normal eight week timetable but the outstanding mitigation works at Stepney Green cannot commence until the shaft is completed and handed over to Transport for London. However, no detailed proposals have been submitted for the land east of Garden Street previously occupied by Stepney City Farm which is subject to this report.

3.2 Future use of land previously occupied by Stepney City Farm

- 3.2.1 The main outstanding issue in respect of the reinstatement of the land occupied and owned by Crossrail is the future of the Trust land on the east side of Garden Street that was originally occupied by Stepney City Farm. Members may recall before any Crossrail works commenced an extensive archaeological investigation was carried out on behalf of Crossrail which identified important remains of King John's Palace or Worcester House as it was later known. In accordance with normal practice, the remains were recorded and then covered up but still remain at the northern end of the land on the east side of Garden Street.
- 3.2.2 Taking into consideration the need to protect and interpret the archaeological history and retain the land in open space use, the only realistic options for the use of the land is to return it Stepney City Farm or extend Stepney Green Park. However, the land east of Garden Street is physically separated from Stepney Green Park by Garden Street and the separation has been further emphasised by the construction of the Crossrail shaft and associated service area on land that was originally part of the Park. Taking into account these constraints it is considered that the optimum use is for the land to revert to its original purpose as part of Stepney City Farm.
- 3.2.3 Attached as Appendix 2 is a schematic plan showing how the land would be used by Stepney City Farm. It will be noted that the majority of the land would be used for the same type of farm like uses already taking place in the existing farm and that it is proposed to create a new public entrance from King John Street. The schematic plan also demonstrates how the archaeological remains would be protected and interpreted. It is also proposed to lay out the various animal enclosures and growing areas to demonstrate the location of now demolished 19th Century buildings. In the longer term the farm would intend to create a visitor centre near the new entrance which would also be beneficial in terms of publicising and interpreting the archaeological value of the area.
- 3.2.4 The Stepney Green Charity has been running the site since 2010, and has improved the facilities to provide first rate animal housing and grazing for sheep, goats, pigs, donkeys and poultry, as well as studio space for rural artists, and a Café and weekly Farmer's Market where produce raised and grown on the farm is also sold. Stepney City Farm is open and free for all to visit.
- 3.2.5 In 2016-17 over 4,000 local school children took part in activities on the site and young people were involved in over 2,000 hours of supported volunteering. Over 500 people attended Open Volunteering green care and animal care sessions, a significant proportion of whom were those marginalised by poor mental/physical health, adults with learning difficulties, recovering addicts, ex-offenders, ex-service personnel, the elderly and those who struggle with employment. The Furry Tales Outreach programme worked with hospitals and care homes to provide therapeutic interaction with farm

animals for those suffering from dementia, and one of the studio spaces was let to local Bengali women's charity, Stitches in Time.

3.2.6 The running of the Farm is funded through the development of generated income streams, supplemented by grant funding and donations, and with the recent appointment of a new Chief Executive and a new Treasurer there is a resilient long term financial strategy for the organisation in place. The accounts for 2016-17 show a decrease in unrestricted reserves; however a review of previous years shows this to be a blip created by a recent unsuccessful grant application. New core funding of £15,000 (£10,000 from the Wax Chandlers and £5,000 from the Santander Foundation) has been achieved in the third quarter of 2017-18, and to date for 2017-18 a total surplus of £61K has been achieved, with a projected end of year unrestricted surplus of £2K.

3.2.7 Implementation of use of Land by Stepney City Farm

3.2.8 If Members agree the proposals set out above, the land will need to be the subject of a lease to the Stepney City Farm Charity. The Charity already has a ten year lease for the existing farm that was granted in 2010 and therefore it would be logical to grant a new lease that included both the existing and proposed Farm land. The Charity has also requested that the lease be of a 25 year term which will provide increased opportunities for obtaining funding grants which generally require such a term for grants toward buildings such as the visitor centre proposed by the charity. In addition the charity has offered to take over the management of the isolated remains of the Baptist chapel located on the north east corner of Garden Street and Stepney Green.

3.3.2 The Stepney City Farm has demonstrated since it was reconstituted in 2010 that it is a financially stable organisation with an effective locally based management structure that is well used by the local community. Officers are supportive of the granting of a 25 year lease due to the increased benefits to the local community that would be provided. An enlarged and successful Stepney City Farm which included a visitor centre and the importance of protecting the archaeological remains on the site. The precedent for granting a longer lease to a charity has been set elsewhere in the borough at other city farms.

3.3.3 A lease cannot be granted until all the land currently in the possession of Crossrail is transferred back to the King George's Field Trust which is not likely to be before late summer of this year. Also as indicated above Crossrail are required, unless otherwise agreed, to reinstate the land to its original condition before it is transferred back to the landowner. Therefore in this instance the land would need to be reinstated as fenced grazing paddocks, which was its original condition before Crossrail took possession. However, on the assumption the site is leased to Stepney City Farm this would be wasteful and pointless since such a layout would not fit in with the likely future layout and use of the land as proposed in Appendix 2.

4. COMMENTS OF THE CHIEF FINANCE OFFICER

- 4.1 This report provides an update for the King George's Field Charity Board on the works that have been undertaken at Mile End Park and Stepney Green to mitigate the loss of land arising from the construction of the Elizabeth Line. It also seeks approval to grant an extended lease of the farm site to the Stepney City Farm charity.
- 4.2 Previous reports have highlighted that all costs associated with the reconfiguration of the farm to accommodate the construction works, and any necessary reinstatement to the farm on completion of the works, are being fully funded by Crossrail. In addition, the Council has been recompensed for income that has been lost through the inability to rent the football pitch in Mile End Park during the construction period and, on completion of the works, Crossrail has provided enhanced changing facilities along with the reprovision of the pitch.
- 4.3 The report seeks approval to add land situated on the east of Garden Street to the existing farm area in order to protect archaeological remains that were discovered when works were being undertaken. It is proposed that the whole site is then leased for a period of 25 years to the Stepney City Farm charity, replacing the existing 10 year lease that has been in place since 2010. This will increase the grant funding opportunities that are available to the charity in its attempts to secure funding support for various initiatives including the proposed construction of a visitor centre.
- 4.4 In line with previous arrangements for city farms, it is likely that the lease will be granted on a peppercorn basis however, as part of the detailed lease negotiations, the Council must ensure that it complies with the best value requirements of Section 123 of the Local Government Act 1972 and relevant European Union State Aid rules.

5. LEGAL COMMENTS

- 5.1 The Council is the Trustee of the Mile End Charity pursuant to the Governing Document which is a Scheme dated 28th February, 2000. The Council is also the trustee for Tredegar Square with the Trust deeds. The Council's Constitution establishes the King George's Fields Charity Board to administer the charities affairs and discharge the Council's trustee functions.
- 5.2 The purpose of the charity is to preserve the Park Lands in perpetuity as a memorial to King George V under the provisions of the King George's Fields Foundation. The 1965 Scheme which established the Foundation gave its purpose as "to promote and to assist in the establishment and to promote the preservation throughout the United Kingdom of Playing Fields for the use and enjoyment of the people..." Additionally, the trustees may " apply the land to such charitable purposes as are set out in the Recreational Charities Act 1958
....."

- 5.3 The Scheme deals with 2 categories of land as identified in Parts 1 and 2 of the Schedule. The first referred to in Part 1 of the Schedule consists of park lands identified in plan KGF2 and which are as follows:
- Stepney Green Park and nearby lands, namely Belgrave Road open space and White Horse Road Park
 - Stepping Stones Farm
- 5.4 Under Article 5(1)(a) the Scheme in addition to any other powers that the trustees have, it gives the Trustees the ability to “let part or parts of the land ... to Third Parties on leases not exceeding 10 years to provide to the public, recreational facilities or such services reasonably ancillary to recreation as are mentioned in Article 7 of the Greater London Parks and Open Spaces Order 1967”.
- 5.5 The Scheme therefore allows the Board to consider letting the land referred to but the Lease cannot be for a term exceeding 10 years.
- 5.6 In considering this report and its recommendations, the Council must have due regard to the need to eliminate unlawful conduct under the Equality Act 2010, the need to advance equality of opportunity and the need to foster good relations between persons who share a protected characteristic and those who do not (the public sector equality duty). There is some information in the report relevant to these considerations in paragraph 6 below.

6. ONE TOWER HAMLETS CONSIDERATIONS

- 6.1 Stepney City Farm is an important community asset that is managed by volunteers and is open and used by all members of the local community. As demonstrated by the most recent annual report and accounts the Farm was used by very large numbers of local schoolchildren and young people and the volunteers and Farm users, including the allotment holders, represented a wide spectrum of the local community. As the population of the borough increases the Farm will become increasingly important as a facility for healthy living and community activity promoting community cohesion.

7. BEST VALUE (BV) IMPLICATIONS

- 7.1 The King George’s Fields Trust is required to consider the value for money implications of its decisions and to secure best value in the provision of all its services. The proposals set out in this report will secure the reinstatement of Stepney City Farm to its original size but with enhanced facilities including the interpretation of its archaeological value without any additional financial cost to the Trust.

8. SUSTAINABLE ACTION FOR A GREENER ENVIRONMENT

- 8.1 The reinstatement of the land currently occupied as a Crossrail construction site to its previous use as a city farm will in itself significantly enhance and

improve the local environment by the 'greening' of the whole site. The Farm gives children and adults a chance to meet farm animals and try out arts and crafts including pottery and woodwork, and connects urban visitors with food production and natural resources through courses, volunteering opportunities, and the supply of affordable local organic standard produce. The commercial aspects of the Farm directly link to supporting the maintenance of this key green space.

9. RISK MANAGEMENT IMPLICATIONS

- 9.1 The lease of the former Crossrail construction site to Stepney City Farm will remove the risks and costs involved in reinstating the land into a beneficial use from the Trust to Stepney City Farm. The only risk associated with this course of action would be in the unlikely event that the Stepney City Farm was unable to fund the reinstatement works to facilitate its use as part of the City Farm. However, as indicated above the City Farm Charity is financially stable, has a good track record on obtaining charitable funding and will rely on volunteering for much of the practical reinstatement works.

10. CRIME AND DISORDER REDUCTION IMPLICATIONS

- 10.1 The existing City Farm is already used by very large numbers of local schoolchildren and young people and the proposed extension would significantly increase the opportunities available to local young people to undertake volunteering and healthy outdoor activities.

11. SAFEGUARDING IMPLICATIONS

- 11.1 As indicated above the Farm is visited by many schoolchildren with whom the Farm staff work. The Farm operates a comprehensive child protection policy and all staff are subject to a full DBS check before being allowed to work at the Farm

Linked Reports, Appendices and Background Documents

Linked Report

- None.

Appendices

- Appendix 1: Stepney Green Reinstatement Proposals
- Appendix 2: Stepney City Farm Draft Layout

Background Documents – Local Authorities (Executive Arrangements)(Access to Information)(England) Regulations 2012

- Stepney City Farm Annual Report 2016-2017.
- Crossrail Schedule 7 Submission for Stepney Green.

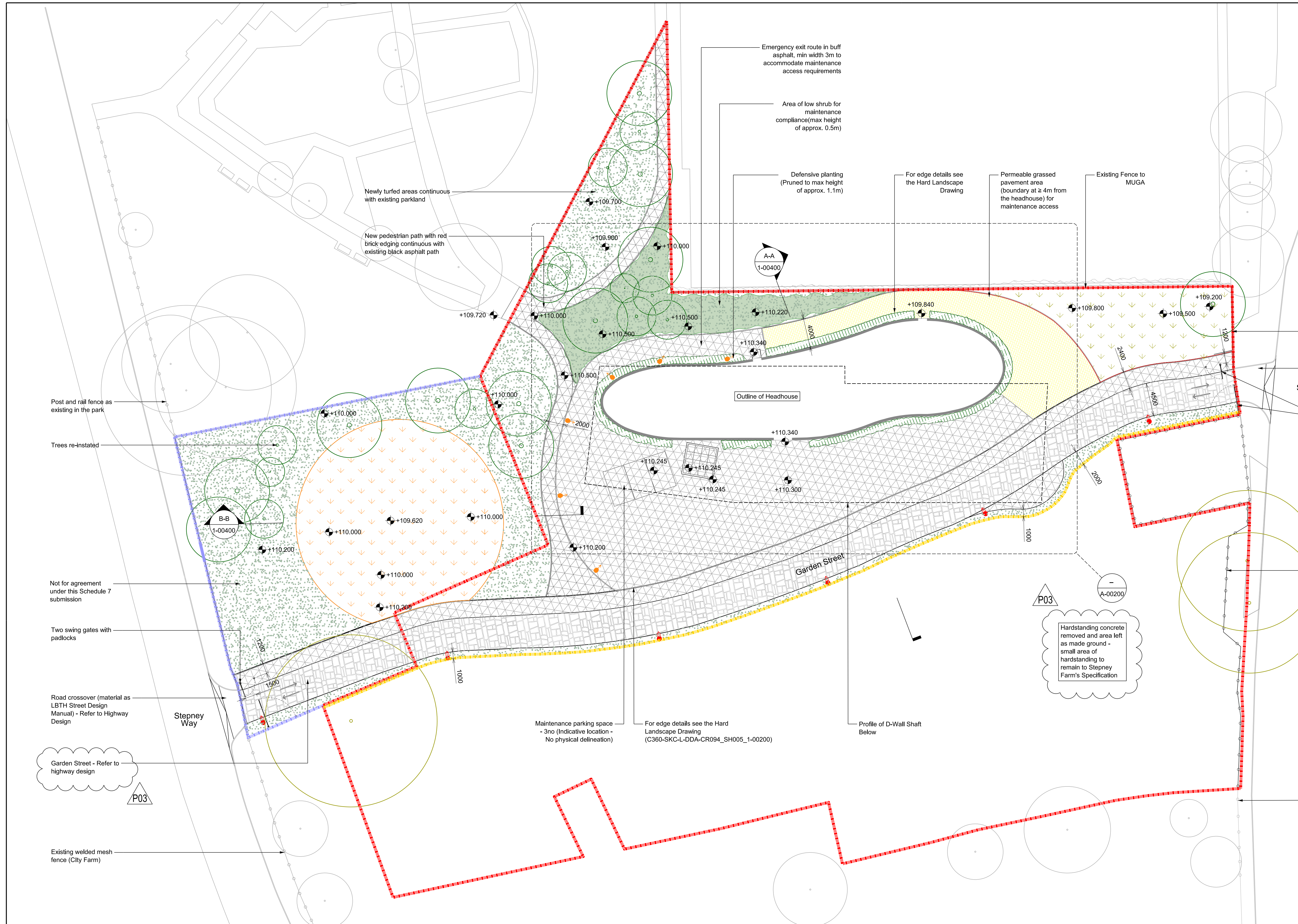
Officer contact details for documents:

N/A

Safety, Health and Environmental Information
 Notes below are additional to hazards/risks normally associated with this type of work:

- Construction
 - Cl.
 - Cii.
- Operations
 - Oi.
 - Oii.
 - Oiii.
- Maintenance
 - Mi.
 - Mii.
 - Miii.
- Dismantling/Demolition (Future)
 - Di.
 - Dii.
 - Diii.

These notes are based on the use of experienced and competent contractors carrying out the work using an approved safe method of working.



Page 21

Rev.	Date	Description	By	Chkd	App	Auth
P01	30/11/2017	First Issue	DB	NO	DB	-
P02	06/12/2017	Revision as Noted	NO	DB	DB	-
P03	12/12/2017	Revision as Noted	DB	DB	DB	-

General notes:

- Do not scale from this drawing.
- Coordinates to the London Survey Grid, heights to the London height datum which is 100 metres below Ordnance Datum Newlyn. See Crossrail Standard CR-STD-010.
- All dimensions are in millimetres unless specified otherwise.
- Drawing to be read in conjunction with other drawings from the Schedule 7 Landscape Restoration Design (C360-SKC-L-DWG-CR094_WS108-50001), highway and service engineers drawings, schedules and specifications.
- Drawing to be read in conjunction with Schedule 7 Landscape Restoration Design Report (C360-SKC-L-RGN-CR094_WS108-50001). Refer to report for information on palette material, plant list for soft landscape and new trees, and street furniture.
- All levels and dimensions are nominal. Final setting out subject to onsite survey and coordination with other disciplines.

Legend of finishes:

- Light Buff Asphalt with Reclaimed Cobbled Edge
- Black asphalt with Red Brick Edging
- Orange Wildflower Meadow with perennial border
- Meadow Area
- Permeable Grassed Pavement (BodPave or Similar)
- Area of low shrub
- Newly turfed areas
- Defensive Planting
- Reclaimed cobbles
- Light Column Refer to MEP design
- Light Bollard Refer to MEP design

Key:

- Boundary of CRL Worksite Restoration works
- Boundary of Reinstatement works
- Proposed boundary between Stepney Green Park and the City Farm (Welded mesh fence to match existing)

Scale: 1:250 @ A1

5m 0 5m 10m 15m 20m 25m

Crossrail
 25 Canada Square
 Canary Wharf
 London
 E14 5LQ

Contract: Eleanor Street & Mile End Shafts (Civil Works)
 Originator: Costain Skanska JV
 Location: Stepney Green Shaft

Title: C360 - Schedule 7 Landscape Restoration Design
 Garden Street
 General Arrangement Plan

By: D.BARRETT
 Chk: D.BARRETT
 App: D.BARRETT
 Auth: ...

Scale: 1:250 @ A1
 Drawing and CAD file No: C360-SKC-L-DDA-CR094_SH005_1-00100
 Rev: P03
 Suitability: S4

RESTRICTED

This page is intentionally left blank

CROSSRAIL VENTILATION SHAFT

Page 23

CROSSRAIL LEASED SITE



NOTES

- The Copyright of this drawing is the property of Create Design Ltd. and must not be copied or otherwise reproduced without written consent.
- The contractor is responsible for checking dimensions, tolerances and references. Any discrepancy to be verified with the Architect before proceeding with the works.
- Do not scale drawing. Figured dimensions to be worked to in all cases.
- All work and materials to be in accordance with current applicable Statutory Legislation and to comply with all relevant Codes of Practice and British Standards.

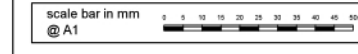
ALL CURRENT DRAWINGS AND SPECIFICATIONS FOR THE PROJECT MUST BE READ IN CONJUNCTION WITH DESIGNER'S HAZARD AND ENVIRONMENTAL ASSESSMENT RECORD.



- - - Existing archaeological remains to be retained from the 19th Century plan to be integrated in the proposed landscape layout
- - - Outline of urban elements from the 19th Century plan to be integrated in the proposed landscape layout
- - - Outline of urban elements from the Medieval and Tudor plan to be integrated in the proposed landscape layout

05.12.17	C	FOR COMMENT / EI / PM
27.11.17	B	FOR COMMENT / EI / PM
24.11.17	A	FOR COMMENT / EI / PM
07.09.17	-	FOR COMMENT / EI / PM

date	rev	revision/author/checker
------	-----	-------------------------



client	STEPNEY CITY FARM
project	STEPNEY CITY FARM STEPNEY WAY, E1 3DG
drawing	PROPOSED LANDSCAPING STRATEGY

drawing no	422 P (90) P 00	rev	C
created by	EI	checked	PM
scale @ A1	1:250	date created	05.09.17
scale @ A3	1:500		

CREATE
DESIGN + ARCHITECTURE
Wiggleworth House,
69 Southwark Bridge Road, London SE1 9HJ
T: +44 (0)20 7021 0307
www.createdesigns.org

This page is intentionally left blank

King George's Fields Charity Board 6th March 2018	 TOWER HAMLETS
Report of: Debbie Jones – Corporate Director, Children's Services	Classification: Unrestricted
Updates on Mile End Park	

Lead Member	Councillor Abdul Chunu Mukit, Lead Member for Culture and Youth
Originating Officer(s)	Stephen Murray Head of Arts Parks and Events
Wards affected	Bow West. Mile End East
Key Decision?	No
Community Plan Theme	Great Place to Live

Executive Summary

The content of the report is all in response to requests for updates from the last meeting of the Trust, three items for noting and commenting on and two items requiring decisions.

Recommendations:

The King Georges Fields Trust is recommended:

1. To note the key outputs on the Mile End Park Management Plan 2017 as set out in Appendix 5.
2. To note the annual review Mile End Park Management Plan 2018-19 as set out in Appendix 2 of the report.
3. To note the budget report for Period 9 2017-18 financial year as set out in Appendix 3.
4. To note the update on the ponds by the Arts and Eco Pavilions as set out in paragraph 3.6 of the report.
5. To approve the revised guidelines on applying to place structures in Mile End Park as set out in Appendix 4.
6. To consider and approve the proposals for subsidised lettings of Pavilions to community organisations as set out in Appendix 1.

1. REASONS FOR THE DECISIONS

- 1.1 The Council is the Trustee of the Mile End Charity and the Council's Constitution establishes the King George's Fields Charity Board ('the Board') to administer the charities affairs and discharge the Council's trustee functions. The purpose of the charity is to preserve the Park Lands in perpetuity as a memorial to King George V under the provisions of the King George's Fields Foundation and in considering the report and recommendations the Board is ensuring that the charity is carrying out the purposes for which it is set up, and no other purpose. :

2. ALTERNATIVE OPTIONS

- 2.1 Not to approve the revised guidelines for applying to place sculptures/plaques in Mile End Park.
- 2.2 Not to approve the proposals on subsidies for the hire of pavilions and which would result in all hirers paying the same set fees.

3. DETAILS OF REPORT

- 3.1 Currently all hirers pay the same charges for the hire of the Arts and Eco pavilions in Mile End Park. Following on from previous discussions, the Board indicated its wish to consider whether there should be different hire rates for Community Organisations/ use. Appendix 1 sets out proposals for the Board to consider.
- 3.2 A requirement of the Green Flag status of Mile End Park requires that there be in place a Mile End Park Management Plan and to annually review the same. The Management Plan is also a working manual for staff. This reviewed Mile End Park Management Plan for 2018-19 is at Appendix 2.
- 3.3 Again, following on from previous discussions, the Board indicated its wish to consider revised guidelines which would apply for applications to place sculptures and plaques on land managed by the Board. Appendix 4 contains the proposed draft revised guidelines for consideration.
- 3.4. Appendix 3 is the Budget report for period 9 and which breaks down income and expenditure as well as providing a projected out turn for the current financial year.
- 3.5. Appendix 5 shows the outcomes of the objectives contained within the 2017-18 Mile End Park Management Plans..
- 3.6. As to an update on the Mile End Ponds, these ponds are currently maintaining reasonable water levels now that the pump systems are fully functioning. Water usage will be monitored over the course of the next few months into summer when the levels tend to drop more quickly. If there is a danger of

exceeding the licence limits for drawing bore hole water then a more detailed options for possible repairs to leaks and re-landscaping will be commissioned.

4. COMMENTS OF THE CHIEF FINANCE OFFICER

As stated in appendix 3 the KGFT is forecasting a possible surplus of £47k, there are no other financial implications.

5. LEGAL COMMENTS

5.1 The Council is the Trustee of the Mile End Charity pursuant to the Governing Document which is a Scheme dated 28th February, 2000. The Council is also the trustee for Tredegar Square with the Trust deeds. The Council's Constitution establishes the King George's Fields Charity Board to administer the charities affairs and discharge the Council's trustee functions.

5.2 The purpose of the charity is to preserve the Park Lands in perpetuity as a memorial to King George V under the provisions of the King George's Fields Foundation. The 1965 Scheme which established the Foundation gave its purpose as "to promote and to assist in the establishment and to promote the preservation throughout the United Kingdom of Playing Fields for the use and enjoyment of the people..." Additionally, the trustees may " apply the land to such charitable purposes as are set out in the Recreational Charities Act 1958

5.3 As trustees, the Board must make sure that the charity is carrying out the purposes for which it is set up, and no other purpose. Further, the Board must act in the Charity's best interests and manage the Charity's resources responsibly.

5.4 This report provides information to the Board so that the trustees can undertake their duties.

5.5 As to community hire, the Scheme permits that the land may be used for facilities for recreation or other leisure-time occupation, provided that it is in the interests of social welfare and for the public benefit. The provision of facilities to the Community at reduced rates is in the interests of social welfare and for the public benefit but needs to be counter-balance against the the Charity's best interests and the Charity's resources being managed responsibly each year. It is noted from Appendix 3 that the Charity is projected to have a possible surplus of £47,000 and therefore there are no financial impediments to reduced rates, this financial year. Further acilitating greater community use is in the Charity's best interests as such use would be for charitable purposes as set out in section 5 of the Charities Act 2011.

5.6 In considering this report and its recommendations, the Council must have due regard to the need to eliminate unlawful conduct under the Equality Act 2010, the need to advance equality of opportunity and the need to foster good relations between persons who share a protected characteristic and those who do not (the public sector equality duty). There is some information in the report relevant to these considerations in paragraph 6 below.

6. ONE TOWER HAMLETS CONSIDERATIONS

- 6.1 Mile End Park is an important community asset that is open to all. As the population of the borough increases it, along with other parks, becomes increasingly important as a facility for healthy living and community activity promoting community cohesion.

7. BEST VALUE (BV) IMPLICATIONS

- 7.1 We will continue to carry out bench marking against similar facilities in the area to ensure we remain competitive in the hire of our buildings and spaces.
- 7.2 The maintenance of the Park is carried out by the Council's Green Team whose services were subject to best value testing when the service was brought back in house from external contracting.

8. SUSTAINABLE ACTION FOR A GREENER ENVIRONMENT

- 8.1 The management of Mile End Park is focussed on providing good quality green spaces in a sustainable way.
- 8.2 The commercial aspects of the park directly link to supporting the maintenance of this key green space.
- 8.3 The park plays an important role in promoting bio diversity and educating the public on environmental issues.

9. RISK MANAGEMENT IMPLICATIONS

- 9.1 The Park management acts to create a sustainable income stream to support the maintenance of the park and its infrastructure.
- 9.2 There has been a recent review of operational inspections and maintenance procedures of play equipment in the park and changes, including use of specialist software on hand held tablets, are being embedded now. At the same time all risk assessments have been reviewed for quality and implementation

10. CRIME AND DISORDER REDUCTION IMPLICATIONS

- 10.1 Mile End Park forms part of the boroughs facilities that help to engage young people in healthy outdoor and indoor activity.

11. SAFEGUARDING IMPLICATIONS

- 11.1 All events involving young people are tightly managed with welfare and safeguarding issues addressed in risk assessments and management plans

11.2 The issue of safeguarding in relation to funfairs has recently been discussed at the borough's Safety Advisory Group, multi agency group including Met Police, and we are looking at how this might be managed more effectively through contracting process.

Linked Reports, Appendices and Background Documents

Linked Report

- NONE.

Appendices

- **One.** Suggested proposal for subsidised hire for community groups of Pavilions
 - **Two.** Mile End Park Management plans 2018-19
 - **Three.** Budget report for period 9
 - **Four.** Revised guidelines for applying to place sculptures/plaques in KGFT land
 - **Five.** Outcomes for 2017-18 objectives from management plans.
-

Background Documents – Local Authorities (Executive Arrangements)(Access to Information)(England) Regulations 2012

NONE

Officer contact details for documents:

Stephen Murray
Head of Arts Parks and Events
X7910

This page is intentionally left blank

Appendix 1.

Mile End Park Pavilions Draft proposals for subsidised hire of Pavilions for Community Group use.

Background.

The Arts and Ecology pavilions operate both as a method of raising income through hire and as community facilities. There are currently no clear operating guidelines on how these two aspects should be proportioned or clear criteria on how decisions might be made around free or subsidised access to these facilities.

Proposal

To define free usage this would include the costs of staff necessary to opening and managing the building during the hire period and these costs would be covered from commercial income generated through hire.

We propose the following key elements to community access guidelines:

- Only groups based in the Borough or able to demonstrate strong ongoing working ties to the Borough should benefit from free or subsidised usage. Usage should be of benefit to Tower Hamlets residents and open to all.
- Free or subsidised usage will not normally be granted for events that make a charge to those attending or seek to make a profit. The exceptions to this would include events raising funds for local charities.
- Friends of Mile End Park group should be awarded an allocation six free bookings a year
- A fixed number of free and subsidised lets to be operated and reviewed each year and offered not exclusively but in the main during periods where commercial hire activity is usually lower. Suggested up to 20 bookings per annum not including Mile End Friends Group allocation.
- A formal and transparent application process for free and subsidised usage. Applications to be considered by a panel on a rolling programme basis across the year and records to be made available for public scrutiny. Average discount around 50% but some 100% discount to be determined by level of benefit and match funding/in kind support.
- We will ensure that any policy on free and subsidised bookings meet with the Council's Equal Opportunities Policy.

This page is intentionally left blank

Appendix 2.

Mile End Park Management Plan 2018-2019

Revised January 2018



**London Borough of Tower Hamlets
Parks & Open Spaces
Arts, Parks & Events Services
Communities, Localities & Culture Directorate**

Contents

1	Introduction	
	1.1 How the Management Plan is organised	4
	Political and Strategic Context	
	2.1 Demography of the Borough	5
	2.2 Democracy	5
	2.3 Council Departments	5
2	2.4 Open Space Strategy	6
	2.5 Community Plan	6
	2.6 Parks Management	6
	2.7 Organogram of Parks & Open Spaces Team	7
	2.8 Organogram of Mile End Park Structure	8
	2.9 Organogram of Green Team	9
3	Fact Sheet	10
	History and Context	
4	4.1 Summary	12
	4.2 Stretching back in time	12
	4.3 A park for people	12-13
	4.4 Constructing the dream	13
	Site Overview	
5	5.1 The Park deconstructed	14
	5.2 Amenities	14
	5.2.1 Amenities south to north (to Green Bridge)	14
	5.2.2 Amenities Green Bridge to north of Park	15
	5.3 Wennington Green	15
	5.4 The Ecology Park	15-16
	5.5 The Art Park	16-17
	5.6 The Green Bridge and Terrace Garden	17-18
	5.7 Adventure Park	19-20
	5.8 The Sport Park	20
	5.9 The Children's Play Park	20-21
	5.10 Interlinking Elements	21-23
	5.11 Map showing segmentation (red) and amenities within Park	24
	A Welcoming Place	
6	6.1 Objectives	25
	6.2 Accessibility	25
	6.3 A visible presence	25
	6.4 Community Park Rangers	25
	6.5 Signage	25
	A Healthy, Safe and Secure Place	
7	7.1 Objectives	26
	7.2 Play Equipment	26
	7.3 Security	26
	7.4 Tower Hamlets Police and Community Safety	27
	7.5 Tower Hamlets Parks & Open Spaces Byelaws	27
	7.6 Dog Control	27-28
	7.7 Risk Reduction and Management	28
	Well Maintained and Clean	
8	8.1 Objectives	29
	8.2 Grounds Maintenance	29
	8.3 Litter clearance	29
	8.4 Repairs and graffiti removal	29-30
	8.5 Park furniture	30
	8.6 Cleanliness	30
	8.7 Park lighting and CCTV	30

	8.8	Financial Allocation	30
		A Sustainable Park	
	9.1	Objectives	31
	9.2	Quality Audit – Green Flag Awards	31
	9.3	Carbon Management Plan	31-32
	9.4	Grass maintenance	32
	9.5	Planting	32
9	9.6	Tree Strategy	33
	9.7	Green Procurement	33
	9.8	Recycling of green waste, and other waste	34
	9.9	Pesticides and Fertilisers	34
	9.10	Water Conservation	34
	9.11	Building Management	34-35
		Mar Conservation and Heritage	
10	10.1	Objectives	36
	10.2	Background	36-37
	10.3	LBTH Local Biodiversity Action Plan 2014-2019	38
		Community Involvement	
	11.1	Objectives	39
	11.2	Community Involvement	39
11	11.3	The Friends	39
	11.4	Volunteering	40-41
	11.5	Events	41
	11.6	Summer Programme	41-43
		Marketing and Publicity	
	12.1	Objectives	44
	12.2.1	Press coverage	44
12	12.2.2	Interpretation	44
	12.4	Signage	45
	12.5	Publicity in literature	47
	12.6	Publicity with local organisations	47
		Implementing of Management Plan	
	13.1	Objectives	48
	13.2	Strategic Context	48
13	13.3	Monitoring and reviewing the plan	48
	13.4	Performance Management	48
	13.5	Service Standards	49
	13.6	Design principles for Tower Hamlets Parks and Open Spaces	49
14		14.1 Previous Year's Action Plan & Progress 2017-18	52-56
		14.2 MEP 5 Year Aspiration Plan (2015-2020)	57-59
		Appendix A	
	A1		60-62
	A2		63-66
	A3		67-73
15		Appendix B	74
		Appendix C1	75-76
		Appendix C2	77-78
		Contact details	79

1 Introduction

Mile End Park is a unique and dynamic environment bisecting one of London's most deprived inner city areas – the London Borough of Tower Hamlets. Made up of a string of zones offering everything from peace and quiet, space for activities and a place to relax and enjoy nature, Mile End Park follows the Regent's Canal from close to the Thames to Victoria Park in the north where Tower Hamlets meets the neighbouring Borough of Hackney.

The Park meanders through the rich industrial and social history of the area, offers local residents a breath of the country and is managed to promote sustainability and good practice. This Management Plan is a document that captures both the history of the Park as well as the values and methods used in managing and maintaining it.

Specifically, this Management Plan aims to show:

- ***The history of the Park and how these features are maintained.***
- ***How the Park is promoted to both the local and wider community.***
- ***How sustainable methods are introduced to manage the Park using a range of best horticultural practice.***
- ***How the Park provides a safe, healthy and secure environment that meets the needs of its users.***
- ***How the local community are consulted and engaged to work towards a shared vision.***

1.1 How the Management Plan is organised

The Management Plan has a contents list to guide the reader. It is laid out to show the history and development of the Park and offers a description of the various zones within the Park. The main focus of the Management Plan has been organised to fit with the objectives of the Green Flag which set the quality standards for this Park:

- ***A Welcoming Place***
- ***Health, Safe and Secure***
- ***Well Maintained and Clean***
- ***Environmental Management***
- ***Biodiversity, Landscape and Management***
- ***Community Involvement***
- ***Marketing and Communication***
- ***Management***

Annual and longer term objectives will be drawn up according to the Green Flag criteria's where necessary. These action plans will be appended in each section of the plan and updating as a live document with progress

2 Political and Strategic Context

2.1 Demography of the Borough

According to the Census ONS 2011 mid-year population projection, the borough's population was 304,900 in June 2017, with a projected rise to 364,500 by 2026. The 2016 figure is the first time the area's population has exceeded 300,000 since before the Second World War.

The borough's population is projected to grow more than 2x as fast as London and 3x as fast as England between 2016 and 2026.

Tower Hamlets has seen drastic population change in recent decades, growing faster than any other local authority in the country. Over the last 30 years, the borough population more than doubled, rising from 144,800 in 1985 to 295,200 in 2015.¹ This briefing will examine how the population is expected to change over the next ten years using population projections, primarily those produced by the Greater London Authority (GLA).

This briefing presents the Greater London Authority's population projections for the borough and breakdowns by MSOA, age group and ethnic group. The projections expect Tower Hamlets to be the fastest growing borough in London over the next ten years, reaching a population of 364,500 in 2026.

The borough includes one of the highest Muslim populations in the country and has an established British Bangladeshi and Pakistani business and residential community.

2.2 Democracy

The council operates an elected Mayor and Cabinet form of executive decision-making, with an overview and scrutiny committee, a standards committee and various other decision-making and regulatory committees. As of 2017, the councilors are: 22 Labour, 9 Independent Group, 5 Conservative, 5 People's Alliance, 3 independent, 1 Liberal Democrat.

2.3 Council Departments

The council employs around 10,500 staff in six directorates around 4,800 of whom are based in schools. The corporate structure is designed to support the council's objective of ensuring the provision of services that are responsive to the needs of individuals and communities and integrated at the point of delivery.

The council management structure consists of five directorates:

- **Governance** directorate comprises Democratic Services, Legal Services, including Electoral Services, Communications and the Strategy and Performance Team.
- **Resources** directorate comprises of the financial, human and ICT resources functions.
- **Place** directorate
- **Health, Adults and Community** directorate
- **Childrens Services** directorate is committed to further improving outcomes for children and young people.

The Parks and Open Spaces Team are a part of the Arts, Parks and Events Services who sit within the Childrens Service Directorate.

2.4 Open Space Strategy

The Tower Hamlets parks and open spaces strategy aims to ensure that the borough's parks and open spaces reflect the shared vision of the council and its partners: to improve the quality of life for everyone living and working in Tower Hamlets. Parks and open spaces are important elements of all the borough's community plan themes: living safely; living well; creating and sharing prosperity; learning achievement, leisure and excellent public services.

The strategy details how the council and its partners plan to achieve and maintain the highest quality parks and open spaces that are safe and accessible to all of the borough's residents and visitors. The strategy also focuses on sustainability. It outlines the council's plan to cater for the future needs of the community and the environment in the design and use of open spaces.

The strategy has been developed in consultation with local people, residents groups, community groups and public bodies with an interest in open space issues. Each year, the council carries out improvements to parks and open spaces, as identified in the open spaces strategy. This includes refurbishment to play areas, park furniture, planting and signage.

https://www.towerhamlets.gov.uk/lgnl/leisure_and_culture/parks_and_open_spaces/open_space_strategy.aspx

2.5 Community Plan

The Community Plan provides the Tower Hamlets Partnership's long-term vision for the borough, articulating local aspirations, needs and priorities. It informs all other strategies and delivery plans of the partnership, including the council's Strategic Plan.

The plan was developed in consultation with local residents and service users, community and voluntary sector organisations, and a range of representative groups and forums, as well as members of the council. It outlines how the partnership will work together to improve the lives of all those who live and work in the borough, and continues the existing focus on tackling poverty and social exclusion in Tower Hamlets, though with a new emphasis on fairness, as suggested by our local Fairness Commission. It also continues to prioritise equality, cohesion and community leadership through the theme of "One Tower Hamlets".

https://www.towerhamlets.gov.uk/lgnl/community_and_living/community_plan/community_plan.aspx

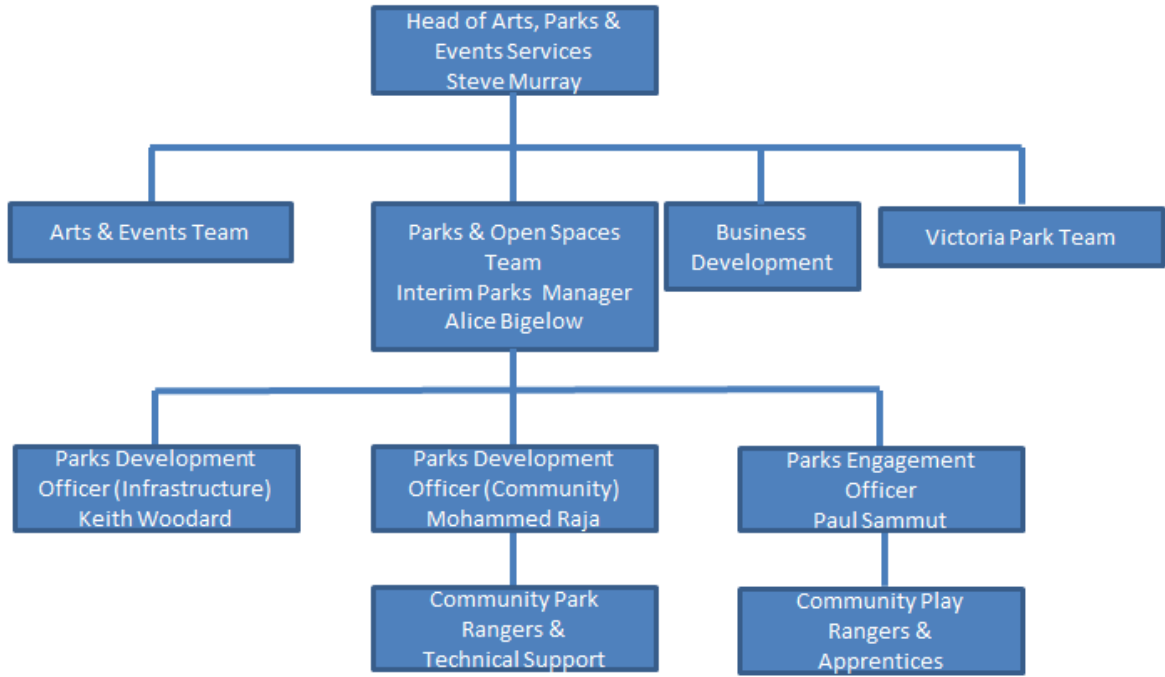
2.6 Parks Management

The Mile End Parks Management falls within the Tower Hamlets Directorate of Children's Services, Division of Sports, Leisure and Culture, Arts, Parks and Events Section. The Mile End Park Management Team is managed by the Tower Hamlets Parks Manager, and includes a number of officers and Park Rangers. This team works alongside the Victoria Park team which is under separate management.

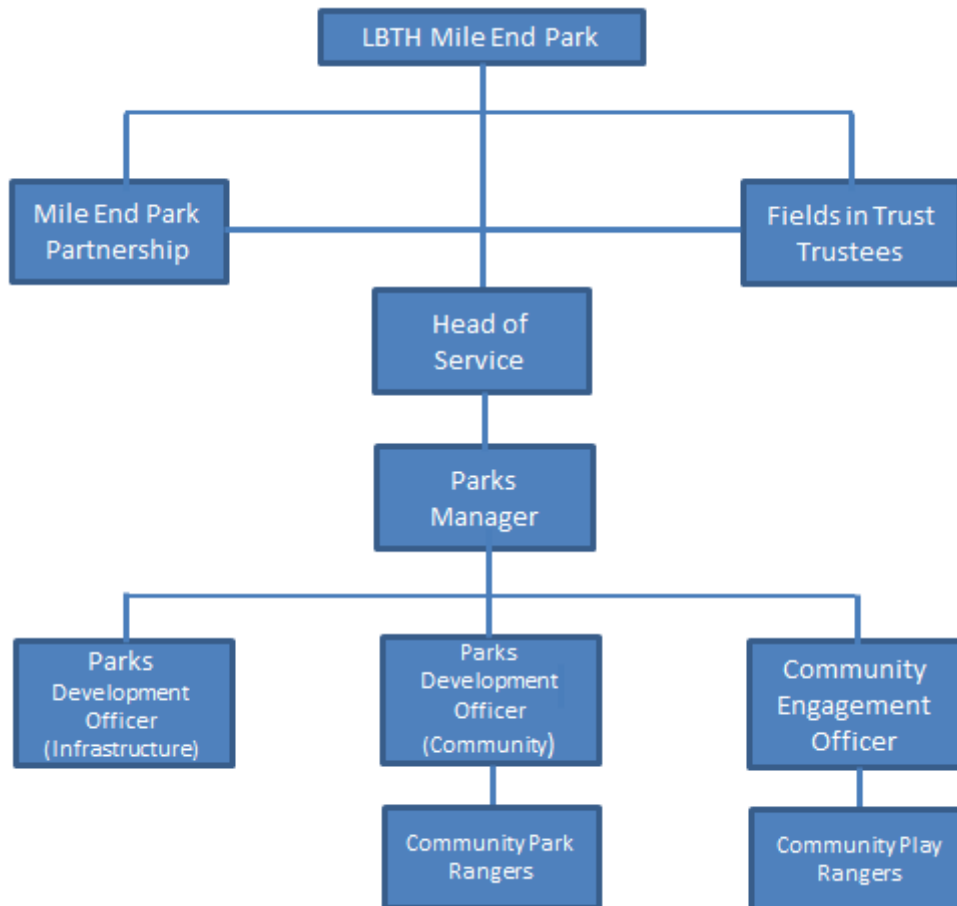
The horticultural and grounds maintenance is carried out by The Green Team falling under the Tower Hamlets Place Directorate, Public Realm Division.

The Mile End Park management falls within the purview of the Fields in Trust, an independent charitable trust working alongside Tower Hamlets council. The site is dual owned by the two organisations.

2.7 Organogram of Parks & Open Spaces Team

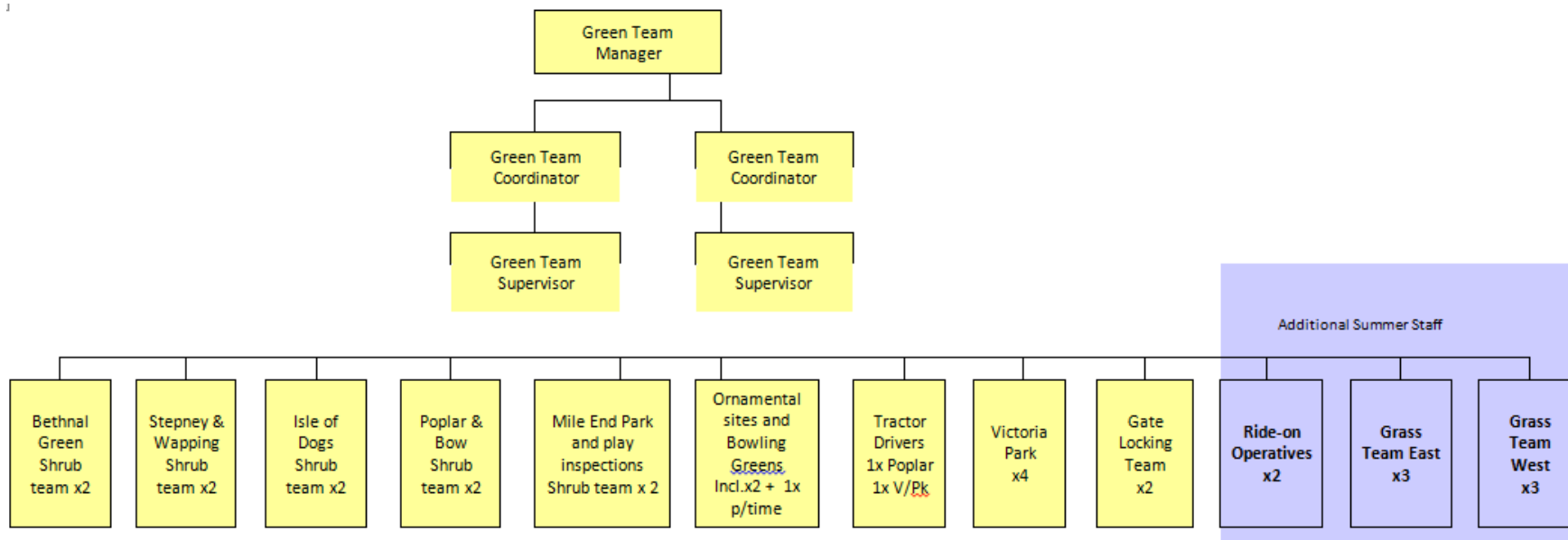


2.8 Organogram of Mile End Park Structure



The Head of Service reports to the Fields in Trust Charity board which comprises of the entire cabinet of Tower Hamlets and chaired by the Executive Mayor. The Head of Service also reports to the Mile End Park Partnership board. This was formed to oversee the construction phases of the park and continues to cover the outstanding items. The board consists of two senior councillors from the London Borough of Tower Hamlets, the East London Business Alliance and trustees of what was the Environment Trust and are joined by the Friends of the park in the capacity of observer who enjoy speaking rights but do not have voting status.

2.9 Organogram of Green Team



Page 41

This has been subject to competitive tendering since the 1988 Local Government Act with contracted service providers delivering both horticultural maintenance and cleansing services. The Council has recently reviewed this arrangement and since 2013 the horticultural maintenance has been directly undertaken by the in-house team 'LBTH Green Team'. Cleansing operations will be undertaken by the Councils Cleansing contractor Veolia. This arrangement has been developed to ensure that high quality, efficient and effective services are delivered.

Council monitoring officers check standards of work such as grass cutting, weeding, pruning and litter picking and any failure is brought to the attention of the relevant service provider to remedy. The monitoring officers also certify due payment to the contracted service provider and issue variation orders for additional work. All cleansing functions are monitored in line with NI 195 standards and horticultural activities on an A-C scale.

3 Fact Sheet

Physical & Geographical Details

The Park is situated within the Mile End and Bow area, and is best described to be as a vertical column down the centre of Tower Hamlets.

Area of Site

The total area of Mile End Park is some 32 hectares (79 acres).

Land Tenure

There is dual ownership of the Park; Fields in Trust and the London Borough of Tower Hamlets. The Council owns Brickfield Gardens, Agnes Green, Kirks Place and the Locksley Street Children's Playground. All of these are located in the south of the Park. Fields in Trust own the rest.

Public Rights of Way

No public rights of way are known to exist across the site; all paths are permissive.

Grid Reference

The Ordnance Survey Grid Reference for Mile End Park:

TQ 362827

X: 536201

Y: 182701

Latitude: 51.526808

Longitude: 0.038022995

Due to the size of the Park, the grid reference of the Art Park has been used.

Planning Authority

The London Borough of Tower Hamlets is the Local Planning Authority.

Electoral Information

Mile End Park is located in the Bow West and Mile End wards.

Transport Links

Bus: There are numerous buses which pass through the Mile End Road junction which are close to the Park. These are 25, 277, D6, D7, 205, 323, 339, 425 and N25.

Tube: The nearest station is Mile End. This station is in Zone 2 and is on the Hammersmith and City Line, the District Line and the Central Line.

Access

With the exception of the Children's Play Park in Locksley Street (locked every day at dusk), the Park is open throughout the year. The layout of the Park does not make it suitable for closure, and the Park's 24 hour access is useful for local users who access many of the Park's amenities through day and night.

The Park has numerous entrances. Vehicle access is for Council services and contractors; all other vehicles are prohibited from entering without prior consent from the Council, unless for emergency access by police or ambulance.

With the exception of a handful of stairway entrances via Regent's Canal, all entrances are accessible to people with limited mobility. Despite its' gradients it is accessible for people with buggies or wheelchairs as well as others with limited mobility. The entrances are well lit, spacious, and some are covered by CCTV.

Amenities

- Three pavilions (Arts, Ecology and Play), two with ponds
- Picnic areas at Kirk's Place, King George's Field, the Events Field and Wennington Green
- Playgrounds (at Brickfield Gardens, the Locksley Street Children's area and the Adventure Park)
- Conservation areas at Kirk's Place and the Arts pavilion
- Sports facilities: climbing wall at the Ecology park, full size astro turf football pitch at King George's Field, 5 a side football pitches, Mile End Stadium and Leisure Centre, BMX track, Multi Use Games Area at the Adventure Park
- Dog Gym at the Adventure Park
- Outdoor gym at Wennington Green

- Retail units under the Green Bridge and adjacent to the Adventure Park
- Across the Park – cycle and walking path, 3 woodland walks, central reservation planting and canal bridges at Meath and Solebay



Map of Tower Hamlets illustrating location of Mile End Park (North and South)

4 History and Context

4.1 Summary

The Park was constructed from several pieces of land and was originally designed to become an almost continuous green strip less than half a mile from Victoria Park in the north and reaching to within 0.75 mile of Limehouse Basin in the south. Although the Park doesn't quite reach Limehouse Basin and there remain three roads that divide it, the presence of the towpath along the Regent's Canal allows for an unbroken walk through the Park.

4.2 Stretching back in time

The site has a rich history, dating as far back as the Peasants' Revolt, as Mile End Green was the place that Watt Tyler, Leader of the Peasant Army met King Richard II and his assembled army in 1381.

In 1820-1838 it was the site of a famous pleasure garden or tea garden, known as the New Globe Inn Gardens. These pleasure gardens were slightly less fashionable than Vauxhall and Raneleigh Gardens, but at sixpence entry fee, still considered itself genteel. The New Globe Inn can still be seen today with its characteristic globe on the roof to the north west of the Green Bridge.

In 1936, following the death of King George V, a charity was formed to improve playing fields and recreation grounds across the country in commemoration of the late King. Mile End Park received the single largest grant of any park in the country and the commemorative plaques can be seen embedded in the gate piers adjacent to Copperfield Road.

In 1944 Lord Abercrombie developed the most ambitious plan for the establishment of parks in London. Amongst the proposals was the establishment of parkland linking Victoria Park to Limehouse Basin which would effectively elongate Mile End Park, however it would be more than 50 years before Lord Abercrombie's vision would be put into effect.

The first V2 bomb dropped on the railway bridge adjacent to Mile End Park in 1944 and the blitz continued to devastate the East End. Such devastation made possible the potential implementation of the Abercrombie Plan and in 1950 Mile End Park was created out of the devastation of the Second World War and marked the beginning of compulsory purchasing of houses and factories to allow for future park expansion.

In the 1980s the GLC (Greater London Council), who managed the original park, resurrected the plans first formulated by Patrick Abercrombie MP and drew up extensive plans. The GLC was abolished by central Government before the plans could be fully implemented. It was not until 1994 when the newly established Millennium Commission sought suitable projects to mark the new millennium that the opportunity arose for the expanded Mile End Park to become a reality. The London Borough of Tower Hamlets joined forces with the Environment Trust and the East London Business Alliance to form the Mile End Park Partnership.

4.3 A park for people

The concept of a park for the 21st century sprang from the local community following a "planning for real" weekend where local people were invited to meet and discuss what they would like to see in the Park. In September 1995, 300 people attended the Mile End Park planning weekend in a local school. Participants were given blank

copies of the Park out line and the Borough's strategic plan and asked to write down what they would like to see in their park and to list their priorities for the site.

It was this public consultation that set the framework for the creation of Mile End Park as we would recognise it today. Once the results of the September consultation event had been assessed, landscape designers were brought in to make the Park a reality.

4.4 Constructing the dream

In January 1998, building work began on the new Mile End Park, and by September the first major construction started with work on the Terrace Garden and the centrepiece of the scheme, "the Green Bridge" that would span the busy Mile End Road.

Work on the Green Bridge was completed by July 1999, followed in October by the start of phase two: the construction of the Art Park and the Ecology Park.

Late 2001 saw the construction of phase three, the Children's Park and the Children's Pavilion. The Children's Park became fully operational in 2003.

A new bridge was opened on October 20th 2009 effectively joining a piece of land on the other side of the canal to Mile End Park and encouraging wider use of the Park to a greater number of people. This was the final piece of outstanding work that was promised to the Millennium Commission.

The Park's urban adventure amenities expanded further with the official opening of the Skate Park in the summer of 2011. The Skate Park is managed by the Council's Sports Services, who also manage the BMX track adjacent to their office.

Like anything organic, the Park continues to develop, but it has at its core the dreams and aspirations of the people drawn from the local community who made their views known at that first consultation meeting. Although the realities of development resulted in some changes to the scheme as it evolved, virtually all elements of the scheme as originally envisioned have been successfully implemented with the exception of the proposed completion of the solar canopy above the go kart track.

5 Site Overview

5.1 The Park deconstructed

The Park can be divided into segments and whilst these have their own individual characteristics they blend to make the whole Park. The Park is bisected by two busy roads and two railway lines and the design of the Park has intentionally incorporated this to make a truly urban park of the 21st century.

The Park has a number of main sections (running north to south): Wennington Green, the Ecology Park, the Art Park, the Green Bridge and Terrace Garden, the Adventure Park, the Sports Park and the Children's Park. In addition to these there are some less distinctly defined areas of the Park that act as transitions for the Park visitor.

5.2 Amenities

All sections of the Park are very well utilised and serve well for recreational, community, adventure, ecology, play, heritage and conservation which helps attract and retain users. Below is a brief summary of the Park's amenities.

5.2.1 Amenities south to north (to Green Bridge)

<i>Brickfield Gardens</i>	<i>Agnes Green</i>	<i>Locksley Street Playground</i>	<i>Kirks Place</i>	<i>King George's Field</i>	<i>Adventure Park</i>	<i>South Park / Events Field</i>	<i>Green Bridge</i>
<i>Play area Picnic area</i>	<i>Picnic area</i>	<i>-Enclosed Playground -Growing Zone -Play Pavilion -Public Toilets -Wildlife pond</i>	<i>-Enclosed Conservation Area -Picnic Area</i>	<i>-Picnic Area -Meadow Area -11 aside Astro Turf</i>	<i>-Skate Park -Graffiti Arch -Revolution Karting -Unit Arches include service: Somali Integration Team, Skate Shop, Indoor Skate Area, Concordia Community Centre, Dog Warden -Five aside Football Pitches -Mile End Stadium -Mile End GLL Leisure Centre -Short Breaks Gym -Urban Adventure Base -BMX Track -Play equipment for elder children -Multi Use Games Area -Dog Gym Copperfield Woodland Walk</i>	<i>-Picnic / Recreation Area -Terrace Gardens -Cascade Fountain -meadow and conservation areas</i>	<i>Units include: -Restaurants -Baristas -Supermarket -Estate Agent -Car park (pay & display)</i>

5.2.2 Amenities Green Bridge to north of Park

Art Park	Ecology Park	Wennington Green	Overall Park
<ul style="list-style-type: none"> -Older People's Community Garden -Woodland Walk -Arts Mound -Arts Pavilion -Arts Lake -Dedicated Conservation Area -Bee Hive -Meadow areas 	<ul style="list-style-type: none"> -Haverfield Open Space -Haverfield Woodland Walk -Haverfield Road Public -Car Park -Climbing Wall -Meath Bridge -Ecology Park -Ecology Lakes x3 -Ecology Pavilion -Compost Bin Area -Meadow area 	<ul style="list-style-type: none"> -Adizone Outdoor Gym -Picnic / Recreation Area -Children's Playground 	<ul style="list-style-type: none"> -Dedicated cycle path throughout the Park -Walking path throughout the path -3 Woodland Walk -Central Reservation Planting -2 Canal Bridges: Meath Bridge and Solebay Bridge

5.3 Wennington Green Concept

This area is designed to allow outdoor entertainment to take place, particularly, though not exclusively, for children.



The Adizone in Wennington Green

Description

The arena comprises a large grass area with some mounding to form a partial amphitheatre. Within the mounding is an outdoor gym (the Adizone) which is brightly coloured and can easily be seen from the road. Fencing defines the area on three sides and the Regent's Canal marks the other boundary. Trees have been planted around the periphery, but the area is easily visible from the road.

A small playground exists across the road that divides the grass area from the Bow Wharf development. The play area is designed for the 1 to 8 year old age group.

5.4 The Ecology Park

Concept

Offering the casual visitor an insight into ecology and biodiversity that may lead to seeking out further information on the subject elsewhere in the Park. Although these themes are present throughout the Park, it is intended for this area to be the core focus area and to build on levels of knowledge and involvement.

Description

The area has three ponds that have attracted damselflies and dragonflies, both new species to the Park. The ponds are designed to give the impression of being linked to the canal, but they are in fact fed from a borehole. The area is visually dominated by

a redundant wind turbine that formerly powered the pump circulating water in the lakes and is an example of wind energy in action. The earth insulated Ecology Pavilion is used as a public building for exhibitions, conferences, seminars and private hire, and acts as a valuable source of revenue.

Work continues here and elsewhere in the Park to undertake some trapping of invertebrates to compare the findings with the previous year in order to monitor the success of the ecology strategy.



The Ecology Park

5.5 The Art Park

Concept

The Art Park is to provide a complementary backdrop for art in all its many forms both indoors and outside in the Park. This ranges from temporary to permanent pieces of sculpture and includes a range of exhibitions held in the earth insulated Art Pavilion.

Description

A large pond with cascades, islands, bridges and the Art Pavilion itself dominates the Arts Park. Further south is a partially planted small hill known as the Art Mound, affording views across the Park. A set of giant grass steps provides an energetic method of reaching the top, but a path around the mound allows for a far gentler ascent. There are beds of imaginative planting that afford interest throughout the year to the front of the Pavilion. To the rear of the Art Pavilion, the globular line of willows has been removed and replaced with a series of new beds planted to provide year round interest.



The Art Park

5.6 The Green Bridge and Terrace Garden

Concept

The Green Bridge is the iconic statement of the Park, making it clear that traffic filled roads will have no dominion over a 21st century park. It unites the two halves of the Park and allows one to walk through the Park oblivious to the four lanes of traffic below on the busy Mile End Road. The Bridge also unites the two communities of Bow and Poplar, no longer separated by the busy road.

The Terrace Garden is designed for year-round interest and was laid out with older people in mind. Each level can be reached by a sloped access and there are many seats offering rest and a place to watch the fountain play in the more formal water feature. The aesthetic interest of this area makes it a popular meeting place for both young and old alike, and in many ways it is the centre piece of the Park.



Bird eye view of the Cascade Garden

Description

The Green Bridge, designed by Piers Gough, spans the Mile End Road and can be easily identified from Mile End Tube station. The original planting scheme was for Silver Birch and Black Pines to be set in grass with a footpath and cycle path running through the centre. The trees are effectively planted in large containers that are plunged into the polystyrene that fill the bridge, and as such must be treated as containerised plants.



The Green Bridge

The Terrace Garden is a series of terraces leading down from the bridge on the southern side to the pool and fountain. Each terrace is planted to maintain year-round interest and is supplied with formal seats. The water feature has a fountain at one end and five burbling jets at the other. Water travels from one end to the other down a cascade, providing the sound of running water. The far side of the feature is less formal and reeds and other natural aquatics have been allowed to establish. In 2012, whips of *Alnus incana*, *Ulex europeas* and *Betula* were planted thickly and are thinned as they grow, governed by the degree of rainfall and the depth of soil.



The Terrace Garden

In 2012, whips of *Alnus incana*, *Ulex europeas* and *Betula* were planted thickly and are thinned as they grow, governed by the degree of rainfall and the depth of soil.

Fencing off the viewing platform has deterred antisocial behaviour, which was a problem with the original bridge design.

Natural play pieces have been installed on the approaches to the bridge. This is part of a strategy to promote play throughout the length of the Park using pieces giving play cues to children, rather than formal play equipment.

The removal of the central reservation from the Bridge has enhanced the visual aspect of the Green Bridge and this will improve as the tree seedlings continue to grow.

5.7 Adventure Park

Concept

The area is designed to appeal to those between the age of 11 and 17. It takes as its starting point that it is impossible to provide a single piece of equipment that would be of interest to both ends of this age range, so one core item has been provided as a bigger and more challenging version of that in the Children's Play Park for the under 11s. From this the younger children can observe the etiquette of this play space and gain confidence before venturing onto the less familiar equipment. The other basis of the design is that most young people in this age group tend to want places that they can sit and chat, away from adults.



The Skate Park



The BMX track

Description

The Urban Adventure Base (UAB) building is a large two floored sea container that has been adapted to make office accommodation to house UAB staff and its users.

Adjacent to the UAB unit is the newly developed Short Breaks Gym, which provides various sports and health related exercise and training sessions specifically for young people with special educational needs and/or disabilities. Both areas are managed as part of the Council's Youth and Community Services.

The BMX track was constructed in 2012 to coincide with the first Olympic Games at which BMX was a recognised Olympic sport. The area is maintained by LBTH and the UAB runs activities for 13-19 year olds.

5.8 The Sport Park

Concept

This is to provide a wide range of sporting activities within the Park, building on the already successful athletic track and all-weather sports pitch. The activities are designed to be accessible to a wide cross section of the community, and have the promotion of healthy lifestyles as a core objective.



GLL Sports Stadium and Leisure Centre

Description

The area contains two all-weather surface sports pitches, a full size athletics track and stadium with changing room complex. These facilities are widely used both by local athletes, local schools and the local community. The associated £15.3 million leisure centre opened in 2006, incorporating two swimming pools, two gyms, a steam room, fitness studios, sauna and physiotherapy and massage surgeries together with 10 outdoor football pitches and changing facilities.

5.9 The Children's Play Park

Concept

This facility provides a range of child-based activities for children aged between 1 and 11 years of age and offers support for the parents and carers of children in this age range.

Description

The outdoor area comprises of a number of pieces of fixed play equipment, a water jet feature, an area for imaginative play based around a make believe dry river bed, a small ruined castle and a variety of interactive play equipment. In addition there is an area for ball games and various ground games markings.

To the rear of the pavilion is the Growing Zone, an area used to offer children the experience of growing fruit and vegetables. Elsewhere is an area of grass, which is managed as wild meadow for younger children to gain a first understanding of nature.

Due to the lack of use of the small catering kiosk, a permanent solution for the use of this space is currently being explored.



Bird's eye view of the children's playground during a summer event in 2013

From January 2017, the playground has been fully open to the public after a series of improvement and renovation works.

All Park and Play Rangers are trained to carry out daily visual inspections and all Officers are trained and qualified to carry out monthly operational play inspections throughout the Park.

The Play Pavilion building is fully equipped with a soft play area, toilets, office and storage space and provides a large indoor play space. The groups using the centre share a range of equipment, but they may also bring their own age or ability appropriate equipment to enhance their sessions.

There is also a fully operational kitchen which allows for both healthy eating activities and cooking sessions to take place so that children get the opportunity to understand how food is prepared. It is linked with the outdoor growing zone.

5.10 Interlinking Elements

Within Mile End Park there are several spaces that connect the segmented areas, and whilst not necessarily featuring so prominently on plans or in accompanying text, they are no less clearly defined and make a significant contribution to the overall success of the Park. Sometimes these are fully developed and with a clear purpose and at other times they are flexible spaces without any defined role. This section includes brief descriptions of these links and minor features.

“**Fishy places**” is a piece of artwork designed by local children to interact with the local anglers that fish the canal. It is situated within the Park at the point that the canal flows under Roman Road at the entrance to the Ecology Park.

The Meath Bridge dominates the area in front of the Climbing Wall. The bridge crosses the canal connecting the Park to Meath Gardens. This was a requirement of the Millennium Commission and was a part of the original scheme. The bridge opened on October 20th 2009 and has proved very popular with people on the Meath Gardens side of the canal and continues to bring new audiences into the Park.

The Climbing Wall is commercially let and managed and is situated adjacent to the canal and in the area that separates the Ecology Park from the Art Park. Behind the Climbing Wall premises, and bound on its western border by Grove Road, is an area of open grass. This space, known locally as **Haverfield Green**, is used for informal games of football and as a space that can be used for larger Park Events for example, ‘Park Life’ that is organised by the Friends of Mile End Park.

Woodland walk areas have been introduced to three areas of scrub on the periphery of the Park. The first woodland walk is sited just off Copperfield Road, adjacent to the dog exercise areas. This area provides a junction of natural walks providing access to different directions within the south of the Park. The second is along Chris’s Wood and the third is the largest, known as the Haverfield Woodland Walk. These areas provide play space taking over a natural area of scrub and insert a series natural play features making them very popular amongst children and schools.

The older people’s garden is sited at the southern end of Clinton Road and was a remnant of an older park design. It was an area of traditional shrubs and grass fenced off from public access and so served no purpose to the Park and has consequently been used to create a garden for older visitors.

Shops and restaurants are built into underside of the Green Bridge, and the rent derived from these units is part of the revenue stream for the Park. The units were initially leased as empty shells, and in return for six months free rental, the tenants were expected to fit out the units using high quality design and materials.

The South Park links the Terrace Garden area to the Adventure Park and is an area of short grass and trees. Like the area behind the Climbing Wall, open areas of grass are useful to balance the more developed areas. However, there are some important areas of scrub and these are managed in the interests of biodiversity to form mixed woodland areas.

The borehole, by its nature, cannot be seen, but its effect on the Park cannot be underestimated. The Park has a licence to remove water directly from the water table beneath the Park. Water from the borehole is pumped into the lake and also feeds the automatic irrigation system to water the trees on the Green Bridge and along the spinal path.

At the north end of Copperfield Road on a space that had no obvious purpose, even for informal recreation, a **Dog Gym** / Dog Agility course has been introduced.

The Railway Arches are situated beneath a busy mainline railway and act as a visual as well as physical barrier. They had acted as a blot on the Park landscape as they were filled with examples of “dirty industry”, for example garages and breakers yards. A policy decision was taken by the London Borough of Tower Hamlets to lease the arches on a 99-year lease from Rail Track and to re-let them to selected

sub-tenants. This has had the effect of cleaning up an untidy area and the tenants include the Animal Wardens' operational headquarters with an animal operating theatre and holding pens as well as Venture, "Concordia" boasting a recording studio and mixing suite and is used by young people from the Somalian, Bangladeshi and English communities. In addition, English as a Second Language and IT skills are taught in classrooms within the centre.

One arch has walls housing official **graffiti boards**, where local artists are able to create graffiti art and which fellow artists wipe out in time to allow new art to be displayed. This central archway leads through to the go-karts and Skateboard Park, the latter offering more graffiti boards. The central arch remains as a linking space between the 5-a-side football facilities and the path leading to the children's Play Park. The two remaining arches are used to house a half pipe to allow skateboarding in wet weather and a skateboard outlet which offers supervision of the site and youth meeting area/cafe.

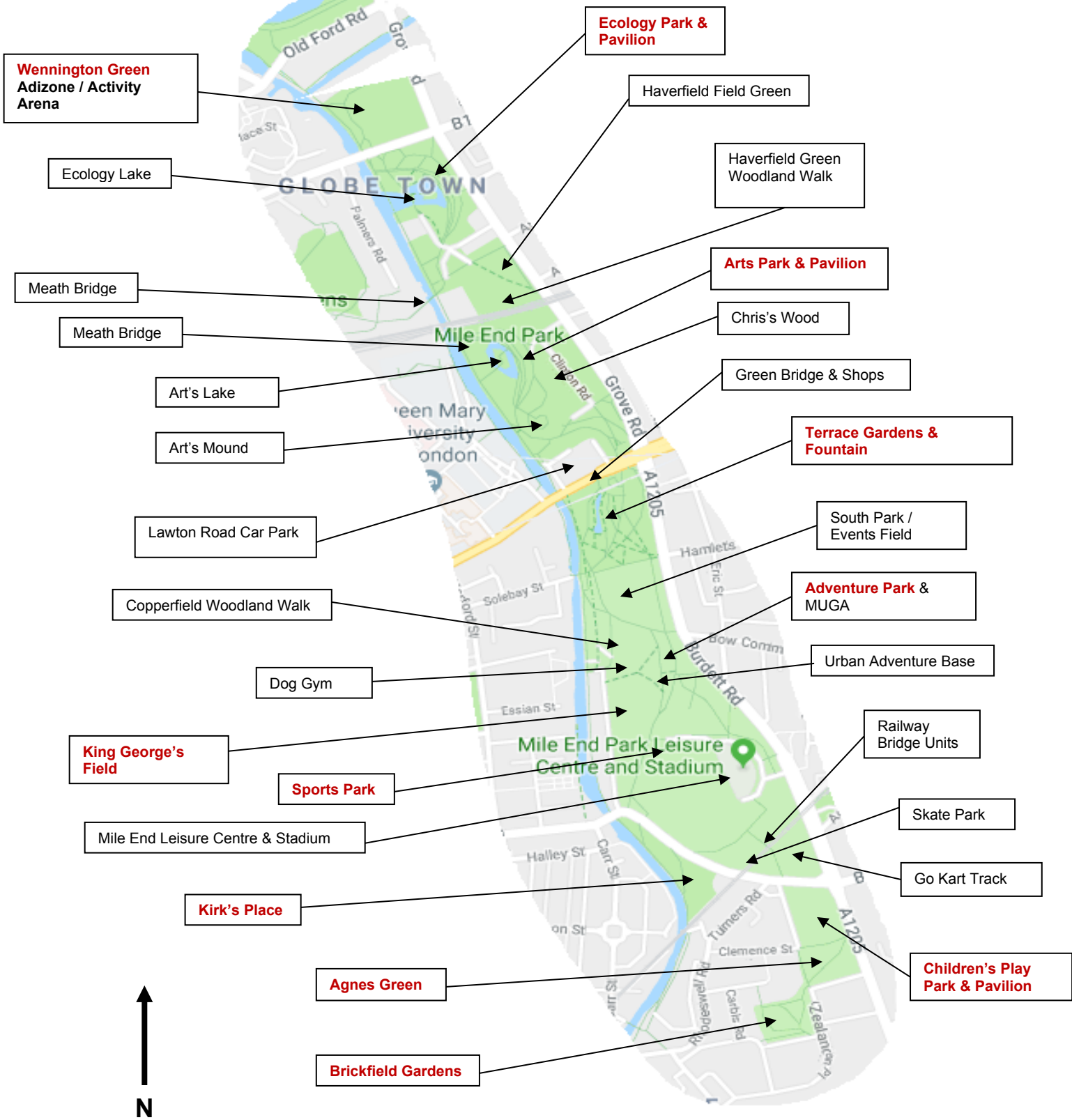
The **Skate Park** has a polished concrete floor and is designed to provide an experience for all abilities from the absolute beginner to the advanced practitioner of the sport. It attracts a wide variety of age groups and although the predominant use is skateboarding it is also used for BMX and in line skating. Revolution Go-Karting is another tenant of the Park and rental from the track is another important source of revenue to the Park.

Kirk's Place is a piece of grass flanking the Regent's Canal and visually does not connect with the Park. Linking the Sport Park via the brick gate pierced entrance/exit, (which still includes the plaque commemorating King George V Playing Fields) and crossing the busy Rhodeswell Road accesses the site. A listed vented brick sewer chimney dominates the area, belonging to Thames Water, whilst the Canal and River Trust is responsible for the canal and towpath. Kirk's Place is also thought to provide a habitat to the rare Bombardier beetle, only the second such habitat in the country.

The Spinal Path is the main path that travels north/ south through the centre of the Park. It is divided into two sections to separate cyclists and pedestrians and is constructed of two surfacing materials a tarmac and a hot tar resin bound surface. A narrow linear shrub border containing mixed shrub and tree planting that is protected by temporary fencing separates the two paths. The cycle path has periodically placed rumble strips to slow down cyclists as they traverse the Park in order to protect the health and safety of all Park users. An application for funding in the region of £60,000 was successful in 2013 to remove the top soil and replant the area. The planting was completed in autumn of 2014 and additional planting is being added during the spring/summer 2017 with the anticipation that the fencing will be removed in 2018.

Appendix 2 part 2

5.11 Map showing segmentation (red) and amenities within Park



6 A Welcoming Place

A welcoming place is somewhere that all the community feels able to access and enjoy the amenities and facilities.

6.1 Objectives

To be welcoming the following objectives have been developed for the Park:

- ***It will be managed to ensure a healthy, safe and secure place for all members of the community.***
- ***An inter-departmental approach to proactively reduce anti-social behaviour.***

6.2 Accessibility

The Park is open all day, seven days a week, 365 days a year. Tower Hamlets keeps all gates open to ensure the Park remains inviting. Sightlines are maintained by the grounds maintenance teams and surrounding meadows are kept low or back from paths to improve views to ensure that all areas of the Park are visible. This assists in not only the reduction of ASB but also enhances the feeling of a secure environment. Vehicle access is restricted to service providers and grounds maintenance teams.

Facilities such as playgrounds, wildlife areas, picnic areas and churches are close to main gates and paths, allowing quick safe access.

6.3 A visible presence

The Park has the benefit of regular visits and inspections by a range of Council officers and service providers. Both the grounds maintenance team and cleansing service provider regular visits to the Park along with officers from both the Clean and Green and the Arts Parks and Events section. This is in addition to regular patrols from both local Safer Neighbourhood Teams and Tower Hamlets Enforcement Officers. All the Community Park and Play Rangers are uniformed and easily identifiable which creates a feeling of security within the Park.

6.4 Community Park Rangers

The role of the Community Park Rangers is key to a positive visitor experience – please see section 5.3 for details.

6.5 Signage

Interpretation, historical, educational and navigation signage are installed throughout the stretch of the Park. Please see sections 8.3 and 8.4 for details.

7 A Healthy, Safe and Secure Place

A healthy, safe and secure place is one that promotes healthy living and exercise. It is a place where everyone may feel safe and secure.

7.1 Objectives

To be a healthy, safe and secure place, the following are applied at Mile End Park:

- ***It will be managed to ensure the personal safety and wellbeing of all Park users is given the highest priority.***
- ***It will be promoted as a place for physical activity, including play, sports and exercise, as well as for promoting mental wellbeing and social confidence.***
- ***Ensure play areas are inspected daily, monthly and annually by Community Park and Play Rangers, Parks Officers and externally by qualified RPII inspectors.***

The Borough is committed to promoting the health, safety and welfare of all employees and of the public who come into contact with its premises and services. It is the policy of the Directorate to develop a positive health and safety culture throughout the organisation based on the belief that good safety is good business.

7.2 Play Equipment

Since November 2016 The Mile End Park Rangers and Play Workers jointly with the Victoria Park Team have adopted a new way of monitoring play equipment by the use of technology. Through a series of phases the Park has implemented the use of a play app using Samsung tablets. Although this method is still in its progressive stages, it has proven to be more reliable, effective and accurate than previous paper recording systems.

In addition to the daily visuals, monthly operational inspections are carried out within the Park by qualified officers, together with annual independent assessment carried out by ROPSA (Royal Society for the Prevention of Accidents).

Risk Assessments for the Park, children's play area and any events in parks are reviewed annually. These are checked by the Parks Management who also take responsibility for ensuring that any resulting actions are monitored and carried out to the required timescales. The service has trained operational play inspectors and all training for Play Workers and Community Park Rangers is refreshed on an annual basis.

7.3 Security

The service is currently undergoing a mini restructure, and an integral change from this is the amalgamation of the Play and Rangers teams based in the Mile End Park and to jointly monitor the Park and deliver activities and events. Both teams are responsible for the safety and enjoyment of the Park users and will encourage the Park bylaws to be up held. All Play and Ranger staff wear high visible uniforms allowing easy identification from a distance. Park personnel are the point at which members of the public can voice their concerns, get information about what is happening in the Park or can give general feedback whilst carrying out their general day to day duties.

Graffiti removal occurs each morning, so that the perpetrators of the graffiti get bored, as their work cannot last for more than a few hours and always less than 24 hours. This has proved very successful in deterring graffiti although it has attracted major attacks from gangs outside the area who presumably see it as a challenge.

All team members undergo DBS checks.

In their role as the visible presence of the Park the teams organise, publicise and lead a range of guided walks as part of an annual programme of events that will encourage more and wider use of the Park as well as ensure that Park byelaws are enforced.

7.4 Tower Hamlets Police and Community Safety

The policing of the Park comes under the authority of the Tower Hamlets Metropolitan Police Service. As well as officers attending parks in response to emergencies or special operations, a local policing initiative is in place within London to increase safety and perceptions of the public realm, including parks, known as 'Safer Neighbourhoods', based around electoral wards with officers having local knowledge.

Working alongside the Police is the Safer Community service, a division of the Council tasked with delivering the Tower Hamlets Safer Communities Strategy to reduce crime, improve quality of life and help to make the borough a safer place. The Safer Neighbourhoods Team, the Council's Parks Team and Safer Communities share intelligence and information not just on antisocial issues but also on more positive ones and support each other to help 'design out crime' or respond quickly to vandalism or damage. There is also a dedicated Tower Hamlets Enforcement Team who patrol parks in the borough on a programmed basis.

CCTV cameras are in operation through the centre of the Park and also in the Children's Play Park. The cameras are monitored from a control room that is linked to the local police station. Cameras are also in operation on the outside of the Park at either side of the Green Bridge.

Lighting in the form of lampposts is located along the spinal path, the towpath, and at crossover points on major routes. These are particularly important as the Park boasts unfettered access around the clock seven days a week throughout the year. The lighting in the Park has been enhanced with the addition of new lights and the replacement of some lights with stronger outputs.

Police liaison occurs between the Parks Officers and the local Police. Officers on police horses continue to be regularly seen patrolling the Park.

7.5 Tower Hamlets Parks & Open Spaces Byelaws

The Park is covered by a set of 'local laws' specific to Tower Hamlets Council's parks and open spaces, which are known as the 'Tower Hamlets Parks and Open Spaces Byelaws'. Byelaws are designed to encourage, regulate and manage the proper use of the all parks and open spaces. The Park is also covered by other laws not mentioned in the byelaws. This includes drinking alcohol, dog control and graffiti; there are other powers available to the Council and Police to take action or deal with offences, including being drunk, disorderly or aggressive. The Byelaws can be enforced by any officer of the Council, including the Tower Hamlets Enforcement Officers, and the Police. The first objective is to inform and educate, so that an offence is not committed or not repeated.

The new Byelaws came into force on 2013 and replace an older set of byelaws which dated back to 1932. The new byelaws reflect the different ways open spaces are now used, and are easier for people to understand and the council to enforce. The byelaws cover aspects such as open fires, cycling, and the protection of wildlife.

http://www.towerhamlets.gov.uk/lgnl/leisure_and_culture/parks_and_open_spaces.aspx

7.6 Dog Control

The Parks Byelaws do not mention dogs as they are supplemental to existing law.

Under the Dogs (Fouling of Land) Act 1996 LBTH Animal Wardens, Tower Hamlets Enforcement Officers and the Police have powers to fine any persons allowing a dog under

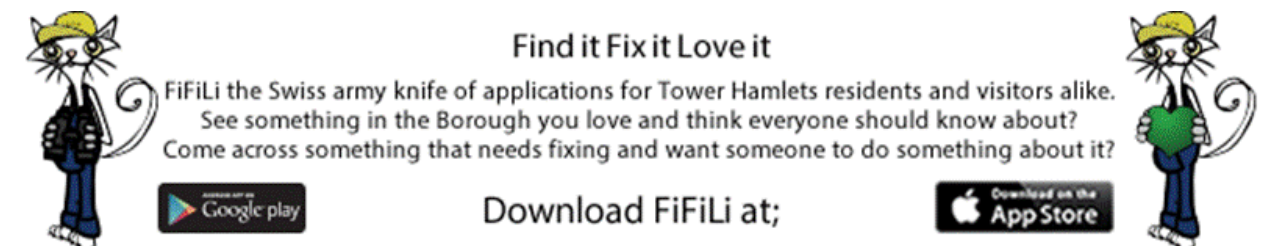
their control to foul and not dispose of the waste within any of the Borough's public open spaces.

The Clean Neighbourhoods and Environment Act 2005 replaces powers made under the Dogs (Fouling of Land) Act and allow councils to introduce dog control Orders. Whilst covering fouling by dogs these orders can also cover dog-related offences such as not exercising dogs within play areas and ornamental gardens, keeping dogs on leads within recognised locations and setting a limit on the number of dogs any person is permitted to exercise within any given park or open space.

7.7 Risk Reduction and Management


Towers Hamlets Parks Team, Green Team staff and users of the Park play a key role in the management and reduction of risk. Prior to the commencement of all maintenance activities the Parks team carry out site specific risk assessments and undertake visual playground inspections. All maintenance staff are equipped with a smartphone device making real time reporting of hazards faster and more effective. The Ranger Service, Enforcement Teams and officers from both Arts, Parks, and Events section and the Clean and Green section play a key role in monitoring and recording inspection data to ensure risks to both staff and members of the public is reduced. In addition to this, the Park has been equipped with QR readers which allow residents and visitors to the Park to report hazards or any other issues directly to the maintenance teams using a smartphone device.

Tower Hamlets Council has an application 'Find it Fix it Love it' (FiFiLi) which allows residents to report any issue within the borough or promote something they like. A photograph can be taken and sent directly to the correct department which enables faster and more effective response times.

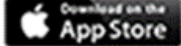


Find it Fix it Love it

FiFiLi the Swiss army knife of applications for Tower Hamlets residents and visitors alike.
See something in the Borough you love and think everyone should know about?
Come across something that needs fixing and want someone to do something about it?

Download on the  Google play

Download FiFiLi at;

Download on the  App Store

8 Well Maintained and Clean

A well maintained and clean place is one where the highest standards of both horticultural and general maintenance are implemented.

8.1 Objectives

To be a well maintained and clean public space, the following objectives have been developed for Mile End Park:

- ***Ensure all infrastructure buildings are maintained to the highest standard.***
- ***Address all litter issues, including graffiti and fly-tipping in the most effective, quick and responsive way.***
- ***Ensure grounds maintenance is managed in the most effective way.***
- ***Ensure all recreation and play areas are inspected and cleansed daily.***

8.2 Grounds Maintenance

This had previously been subject to competitive tendering since the 1988 Local Government Act with contracted service providers delivering both horticultural maintenance and cleansing services. Since 2013 horticultural maintenance has been directly undertaken by an in-house 'Green Team' run by the Council's Public Realm Department. Cleansing operations are undertaken by the Council's Cleansing contractor, Veolia. This arrangement has been developed to ensure that high quality, efficient and effective services are delivered.

Monitoring of the standards are conducted bi-weekly by the Parks Officers and the Green Team, standards include grass cutting, weeding, pruning and litter picking, and any failure is brought to the attention of the relevant service provider to remedy. The monitoring officers also certify due payment to the contracted service provider and issue variation orders for additional work. All cleansing functions are monitored in line with NI 195 standards and horticultural activities on an A-C scale.

8.3 Litter clearance

The Borough's parks are all designated at Grade C under the Environmental Protection Act 1990. This means that the contractor must maintain a 24-hour response time to remove particular problems such as fly tipping. In addition Green Team officers undertake regular checks and any failure is brought to the attention of the relevant service provider to remedy. The Borough's parks generally score above the designated grade, indeed within the acceptable limit for Grade B sites. The definition of Grade B is "predominantly free of litter or refuse except for small items". The Borough's parks cleansing contractor, Veolia Environmental Services Ltd. picks litter from the grass and shrub beds and empties the litter-bins on a daily basis and sweeps the paths. The collection of leaves in the autumn has been retained as an in-house activity to support the development of on-site composting opportunities.

The Borough's grass sports pitches and Green Flag sites (grass and paved areas) are cleaned of dog faeces once a week, with dog bins emptied daily.

8.4 Repairs and graffiti removal

Reactive maintenance works are carried out as and when necessary (making use of measured term contracts where feasible) to make good any health and safety problems on the site. Priority 1 repairs (urgent hazards) are carried out within 24 hours, down to Priority 3 repairs which can take up to one month. Offensive graffiti are treated as Priority 1 repairs and are removed directly by the Veolia staff (Graffiti Team) if possible or reported for urgent removal by contractors. Any reactive maintenance is reported to a range of specialist contractors who respond according to agreed response times. These are, depending on critical impact on the safe and effective working of the park and the protection of the staff

and public, immediately, same working day, within 24 hours, within 48 hours or as planned work for longer time periods.

Any building and structural defects found by any member of the public can also be reported through its Customer Call Centre on 020 7364 5000, or by email to parks@towerhamlets.gov.uk.

8.5 Park furniture

Seating is maintained and kept in good repair and an annual visual check is carried out each January so that all repairs can be completed by Easter. More seats of the tubular steel design will be added where seating is considered to be sparse. As the particular design costs £1,000.00 per seat it is only possible to add one or two seats a year unless a previously unidentified source of funding becomes available.

Examples of earlier styles of seating that do not conform to the corporate image of the Park have now been removed. The two types of seat provided are stainless steel tubular for paths and chunky wooden for setting in grass.

The Park has also benefitted from the installation of natural seating. This has proven successful in terms of its usage, cost-effectiveness, maintenance and sustainability.

General day to day repairs are dealt with in one of three ways:

- 1) *Small repairs e.g. blocked sinks/ urinals, loose nuts, screws etc. are dealt with by the Rangers.*
- 2) *Routine repairs that fall outside the scope of the Rangers are passed on by the Rangers directly to local contractors who carry out most of the Council's repair e.g. water leaks or fence repairs.*
- 3) *Finally, major repairs e.g. boiler replacement is passed to the Council's Buildings and Construction team to be managed by their clerk of works.*

Play equipment is repaired by the manufacturer/supplier other than routine replacements e.g. swing chains, which are carried out by the Rangers.

8.6 Cleanliness

Tower Hamlets Council places significant emphasis on maintaining a high level of cleanliness at the Park including keeping the site free of litter, fly tipping and dog waste. Normally all enquiries and complaints about cleanliness or nuisance at open spaces are made via the details provided in 6.3.

8.7 Park lighting and CCTV

The Borough's Street Environment Department and the Safer Communities Services manage the lighting and CCTV across a number of park sites. The lighting and CCTV have helped to reduce crime and fear of crime within the Park. The local police have indicated that the level of incidents within the Park has diminished.

The Borough's Street Environment Department manages the budgets for all park lighting since they take care of all public lighting for the authority.

8.8 Financial Allocation

The Park has been designed specifically to reduce the amount of maintenance necessary in a bid to be a sustainable Park. The various sources of revenue described previously are used to ensure the ongoing sustainability of the various projects within the Park. The annual grounds maintenance budget is £180,000, which is mostly expended via services provided by the in house Green Team.

9 A Sustainable Park

A sustainable park is one where all attention is given to green principles, using recycled materials, ensuring that biodiversity is enhanced and protected.

9.1 Objectives

To be a sustainable place, the following objectives have been developed for Mile End Park:

- ***To improve the environmental sustainability within all Parks and Open Spaces.***
- ***Increase the use of sustainable materials within the Park.***
- ***To extend the service's corporate volunteer programme for the site to help maintain horticultural standards.***

9.2 Quality Audit – Green Flag Awards

The Park is regularly monitored by the Council Officers from the Green Team, the Parks Team, and other Council teams such as the Tower Hamlets Enforcement Officers.

Under the latest service re-structure the Parks service was amalgamated with the Arts and Events Service to become the Council's Arts, Parks and Events Service. Under this new restructure officers from the Arts and Events Team monitor and inspect the Park during events and also while hosting activities.

The overall quality of the Park is monitored through the annual Green Flag Awards scheme. The Green Flag Awards scheme is a national standard for parks and green spaces and provides a benchmark against which excellence and provision of high quality landscapes are measured. The annual awards play an important role in ensuring the continuing quality of the parks, provision for community and visitors, developing the environment standards.

The process for Green Flag Judging involves an in depth review of Park Management Plans prior to a site visit. Each visit is written up into a summary and includes an overall score for the Park out of a total 100. General comments relating to each assessment criteria are included highlighting any particular issues as well as acknowledging where positive management action, projects or initiatives have occurred.

Parks are assessed against the criteria described in section 1 and which form the basis of the majority of this Management Plan:

- ***A Welcoming Place***
- ***Health, Safety and Security***
- ***Maintenance of Equipment, Buildings and Landscape***
- ***Litter Cleanliness and Vandalism***
- ***Environmental Sustainability***
- ***Conservation Heritage and Nature***
- ***Community Involvement***
- ***Marketing***

In 2015-16, a record nine parks in the Borough successfully reached Green Flag Standard, and in addition, a further three contracted parks under service level agreement achieved this status also. Mile End Park has been awarded this status every year since 2004.

9.3 Carbon Management Plan

Government estimates from 2006 indicated that some 2,348,000 tonnes of CO₂ were emitted in Tower Hamlets - just over 11 tonnes per head - the second highest emitting borough in London. Most of this (65%) comes from the commercial and industrial sector,

with 18% from housing and 17% from transport. Targets have been set to reduce these CO2 emissions. To achieve these targets all sectors of the community have a part to play by reducing consumption of gas, electricity, petrol and diesel.

The Council began working with the Carbon Trust in June 2008 in Phase 6 of the Local Authority Carbon Management (LACM) Programme. The primary focus of the work is to reduce emissions under the control of the local authority such as buildings, vehicle fleets, street lighting and landfill sites, but takes into account the work of our third sector partners and contractors, such as Veolia. One of the outputs of the Programme was the production of a Carbon Management Plan. This was adopted by Cabinet on 8th April 2009. Parks and Open Spaces have actively fed into this plan and have identified savings to be made from improvements to park buildings reductions in contractor's mileage and investment in new, more efficient vehicles and plant.

The Carbon Management Plan commits the Council to a 60% reduction in CO2 emissions by 2020 (on 2007 levels). The Carbon Management Plan can be found here: http://www.towerhamlets.gov.uk/lgnl/environment_and_planning/sustainability/carbon_reduction.aspx

9.4 Grass maintenance

In its original condition the Park was mostly comprised of short mown grass that was incredibly species poor, a condition that was also reflected in the number of species of wildlife that could be seen. Areas not covered in short grass were mostly covered in tarmac or used for fly tipping. In 2004, monitoring of some invertebrates took place in the Park to provide a baseline against which to measure progress of the ecological policy.

The grass along the main road is mostly kept short whilst large areas of the interior and all slopes are managed as meadowland. A one-metre strip of short mown grass flanks all the paths in the Park and a two-metre strip of unmown grass surrounds all areas of copse and scrub to form a buffer zone and to increase specie biodiversity. This course of action prevents indiscriminate pedestrian trampling but does allow areas for picnicking, sunbathing etc..

The replacement of the strict mowing regime with a meadow management plan has not only given a huge boost in terms of biodiversity, but also slightly reduces the annual cost of mowing.

All wood felled on the site is either left in situ to decompose or is taken to the long grass areas where the benefit to wildlife derived from the decomposing wood is greatest. Wood felled at other sites is also welcomed in the Park as are bark chippings which are used for footpaths and to create a forest floor habitat amongst groups of trees. The only exception to this policy is if the trees are diseased and the arborist recommends removal and burning.

9.5 Planting

50,000 bulbs were planted each year for a period of 10 years starting in 2005. Volunteers from Canary Wharf and the city planted almost 500,000 bulbs and it is estimated that between 2005 and 2015 in total we have planted in the region of 950,000 bulbs in the Park. Bulbs have been introduced each autumn in large drifts to bring a more horticultural flavour to the Park. A continual band of snowdrops along front edge of the Park has been extended each year and now heralds the spring to the casual passer-by along the complete length of the Park. At the Silver Birch Grove a large drift of Chionodoxa, Scilla, Anemone, and Bluebell was planted by volunteers and these continue to be added to provide a carpet beneath the trees from February to May.

9.6 Tree Strategy

The trees are mainly relatively young and there are few that can truly be called mature. Due to the thin topsoil and the planting of larger specimens, establishment has become an issue. However, the Park seems to have been over planted, so currently trees that do not survive are not automatically replaced.

The larger trees, mostly London Plane, are pruned on a four-year rotation to prevent encroachment onto the road which is used by double decker buses.

Many of the trees are planted on thin soils or, in the case of the Green Bridge, in large containers. For this reason it is important for all the trees to be routinely checked for drought intolerance and to irrigate as necessary. In 2012 a programme was implemented in having very small whips on the Bridge with water availability to determine the root growth, and so the eventual height of the trees, and to plant with drought tolerant species, including gorse.

An annual inspection of the trees informs a programme of restorative/remedial pruning, and in order to prevent an aging tree stock, some whips are planted each year at various points throughout the Park.

Shrubs are planted throughout the Park and are pruned to retain their natural habit, flowering and fruiting characteristics. Borders are lightly forked annually and compost added where available. Borders are kept in a weed free condition. Where overcrowding occurs, shrubs are removed as part of the winter work programme.

Our trees are surveyed on a regular basis and the information recorded digitally on the Borough's geographic information system, using "Ezytreev" software. 24,559 trees (including small ones and some large shrubs such as holly and yew specimens) were for this site in 2010 (this is not inclusive of approximately 30,000 whips planted on top of the Green Bridge and also the new orchard whips in the playground). The system holds detailed information on individual trees, their condition, and maintenance history. The survey information is regularly updated. Surveyors undertake risk assessments and provide individual recommendations for any works needed and the frequency of re-inspection.

9.7 Green Procurement

Procurement is one of the 5 key areas being examined through the emerging Borough Environmental Strategy. In the interim, the purchase and use of materials and supplies from endangered resources, such as peat and peat-based composts, endangered hard wood and tropical species of timber, rocks from Pennine limestone pavements, bulbs and seeds taken from the wild, or products comprising such items are banned. All timbers are to be supplied from sustainable sources and are to accord with the Forest Stewardship Council's guidelines. The Parks and Open Spaces Service will abide by the Council's Environmental Strategy (see Appendix A.12) which was adopted in 2007.

Tower Hamlets was recognised as a Fairtrade borough by the Fairtrade Foundation (see www.fairtrade.org.uk) in 2006 and won a London-wide award* by achieving the following targets:

- *The Council must pass a resolution supporting Fairtrade, and serve Fairtrade coffee and tea at its meetings and in offices and canteens,*
- *A range of Fairtrade products must be readily available in the area's shops and served in local cafés and catering establishments,*
- *Fairtrade products must be used by a number of local work places (estate agents, hairdressers etc.) and community organisations (churches, schools etc.),*
- *The Council must attract popular support for the campaign,*
- *A local Fairtrade steering group must be convened to ensure continued commitment to Fairtrade Town status.*

In January 2013 the Council adopted a set of procurement imperatives designed to support, amongst other things, local purchasing and procurement.

9.8 Recycling of green waste, and other waste

Where possible, fallen or felled timber is left on the ground to increase biodiversity. However when tree works are carried out woodchip/timber are also recycled back into the Park with some timber transported to nearby parks to be used as compost or mulch.

The Parks Team and Green Team aim to develop a number of small scale compost facilities within its parks with the intention to recycle 30-40% of our green waste within a few years. Relatively few parks are suitable for such facilities as three quarters of our sites are less than one hectare in size. A leaf composting trial has established in Victoria Park, followed by a recent site in Bartlett Park. Green waste is currently separated and taken to the local waste transfer station where it is recycled for use elsewhere. 100% of all Green waste is recycled. In addition 100% of leaf collected within autumn is shredded and returned to parks throughout Tower Hamlets

The supply of seasonal bedding plants requires that we collect and recycle plant pots and trays after each use. Where possible we ensure that plants are grown in peat-free compost (with the exception of a tiny percentage of feature plants that will not tolerate peat-free composts) and this is monitored through site visits to the provider nursery and at the time of delivery.

9.9 Pesticides and Fertilisers

The Parks and Open Spaces Service is moving away from chemicals where possible, replacing their use with cultural and manual methods.

- *No blanket application of any herbicide or pesticide is used within any Parks and Open Spaces or playgrounds, on either hard surfaces or on planted areas, except for persistent weeds such as Japanese Knotweed which is chemically treated with a contact herbicide (Glyphosate) at least twice in a season.*
- *Brown tail moth infestations are pruned out and the arising's disposed of. It is many years since the Borough permitted the use of organophosphate pesticides.*
- *Rats and other pests are monitored and outbreaks controlled only as and when necessary.*

Tower Hamlets promotes the use of sustainable methods of weed suppression. The primary method of weed suppression is mulching utilizing leaf mulch recycled from the previous season's leaf fall.

9.10 Water Conservation

There are water access points conveniently located throughout the Park, and also water can be accessed directly from the pavilions. However, the use of mulching and compost on trees and shrubs helps minimise water use. New trees also have mulching or matting around bases, and are only watered when necessary. Wherever possible, trees planted in the Park are low water demand, which combined with proper mulching and aftercare reduces the amount of watering they require to establish.

9.11 Building Management

There are three earth sheltered buildings in the Park, which are the first such publicly owned buildings in the United Kingdom. From the entrance, most of the building is covered with earth and grass and has the appearance of a gentle hillock. A glass front looks out on to the Park allowing a lot of natural light whilst the earth mounding provides insulation for the building. The pavilions are currently being used separately as a children's' pavilion, an arts pavilion and an ecology pavilion.

Similar in style to the pavilions, there are also 8 retail units attached to the Green Bridge which are leased to various retailers. These include Peri Peri Chicken, Costa, Zeera Restaurant, Nandos, Meade's Estate Agent, Starbucks, Cooperative and a donut shop.

The Council also owns some container offices located in the Adventure Park. These container offices were originally brought in to house the Ranger team, however due to alternative office arrangements, these had been let to a neighbouring council service, Urban Adventure Base from the Youth & Community Services.

Adjacent to the Sport Park, there are a number of railway arch units which the Council sublets from Cross Rail to private, community and Council tenants. These are located near the Skate Park and tenants include: Revolution Karting, Council's Urban Adventure Base, Concordia, Somali Integration Team and the Council's Animal Warden team.

Within the Children's Playground in Locksley Street, there is a small cafeteria unit owned by the Council and is currently under light repairs in preparation for a new tender.

All health and safety checks and building compliance checks are the responsibility of the tenants, or the Council, where management of the building is retained (i.e. the three pavilions).

10 Conservation and Heritage

Protecting conservation and heritage means ensuring that both the natural and historical assets of the Park are valued and enhanced, that information is provided to the public about the biology, biodiversity and history of the site.

10.1 Objectives

To be a conservation and heritage flagship, the following objectives will apply at Mile End Park:

- ***The heritage of the Park will be promoted and maintained to ensure that it is fully appreciated.***
- ***To support and develop initiatives in line with the Local Biodiversity Action Plan.***

10.2 Background

As a relatively newly constructed Park, little of the physical heritage remains to be conserved. However, there are some smaller elements that give a flavour of former times and these should be conserved and interpreted for the Park visitor.

A plaque just outside the Park on the Railway Bridge on Grove Road commemorates the place that the first V2 bomb landed in London. This has been incorporated into an information panel in the Park to highlight the very real sacrifice made by the people living in this area during the Second World War.



Located on the railway Arches in Burdett Road, just off Mile End Park Haverfield Green (Ecology Park)

Two plaques proclaiming the Park as the King George the V Playing Fields are embedded in the gate piers adjacent to Copperfield Road. Interpretation panels refer to the life of King George V and the setting up of the fund for the development of the Park.

A tall brick chimney like structure dominates the area currently known as Kirk's Place and probably dates back to Victorian times. It is, in fact, a listed sewer vent and as well as protection and some restoration it should be interpreted either in its own right or as a longstanding feature of the local skyline. It is managed by the Canals and River Trust.



Brick Sewer Ventilation Shaft in Kirk's Place

The Regent's Canal, although strictly speaking not a part of the Park, does have a symbiotic relationship with the Park that should be recognised and celebrated.

An art exhibition evoking the memories of people who had moved to the Mile End area resulted in English Heritage designing two more panels to be sited in the Park describing local history through the memories of the wider community in relation to the locale.

10.3 LBTH Local Biodiversity Action Plan 2014-2019

Tower Hamlets is a densely built-up inner London borough. It nevertheless supports a surprising diversity of wild plants and animals in a range of habitats. These include protected species such as bats and the Black Redstart, and a number of rare invertebrates associated with Brownfield land, such as the Brown-banded Carder Bee and Streaked Bombardier Beetle.

A Local Biodiversity Action Plan (LBAP) for 2014-2019 has been produced by the Tower Hamlets biodiversity partnership, known as 'Tower Habitats'. The partnership includes Tower Hamlets Council, Tower Hamlets Homes, social housing providers, local and London wide voluntary and community groups, businesses and local residents. All of these groups and individuals will be involved in implementation of the LBAP.

The plan identifies priority habitats and species in Tower Hamlets, and sets objectives and, where appropriate, targets for what needs to be done to ensure their conservation. This will inform the implementation of projects and actions by partner organisations. It also provides guidance to developers on the kinds of biodiversity enhancements expected in new

developments. The LBAP does not include detailed actions. These will be developed throughout the five-year duration of the LBAP, and will be entered and reported on in the Biodiversity Action Reporting System (BARS)¹, a national database set up by the Joint Nature Conservation Committee to monitor biodiversity action across the UK.

<http://www.towerhabitats.org/5/Tower%20Hamlets%20Local%20Biodiversity%20Action%20Plan%202014-19.pdf>

11 Community Involvement

Community involvement means offering opportunities for local residents to engage in activities, decision making and learning through the Park.

11.1 Objectives

The following objectives have been identified to ensure the Park meets the needs of its users and the local community

- ***The Parks Team support local community groups by accommodating regular groups within the Pavilions to deliver a selection of children's and community programmes.***
- ***Community based activities and events are delivered by the Council and local community groups.***
- ***Work in partnership with the local organisations to ensure the Park is maximised, in relation to its usage and also make input to development.***

11.2 Community Involvement

The Parks Team is committed to continuing its community engagement and the relationship it has built between the Park and local people.

Community engagement occurs on different levels from user group meetings to individual volunteering, to providing cookery activities for the children. Events successfully engaging the community include the annual Halloween bash where volunteers from the community give up their Saturday evening to dress up and put on a show. They have written their own scripts, designed their own costumes and entertained the local residents who attend.

11.3 The Friends

The key outcome of the community involvement process when the Park was being constructed was the "Friends of Mile End Park" (FOMEPE). In 2010 the Friends took over what had previously been a jointly run event with Parks staff and ran it entirely independently of the Park including the raising of the funding to support the event. The event, "Park Life" was deemed a great success and an example of how the Friends work with and on behalf of the Park. The Friends group continues to deliver the Dog Show and Fair annually in the Haverfield Green which attracts locals and remains a popular element of the annual events programme.

The FOMEPE is an independent local organisation comprising of a group of volunteers who are users of the Park, members from local community groups and local residents who work closely with the Council and play a key role in enhancing and protecting the Mile End Park. The group volunteer their time and get involved in a range of projects such as clean-ups, delivering events, fund raising and contributing to the development of the Park. They act as the Park's eyes and ears, informing the Parks Team of any issues, together with providing critical feedback.

To ensure good engagement and communication, parks officers jointly walk through the Park every quarter with the newly elected FOMEPE chair, John White and members. This gives an opportunity to discuss any issues, developments, updates or projects within the Park.

The Parks Team will continue to support the annual Park Life event, together with the programmed clean-ups and additional events hosted by the Friends group.

For more information on the FOMEPE or for those wishing to get involved visit link:

<http://www.fomepe.org.uk/>

1.4 Volunteering

There are three distinct types of volunteer who work in the Park, and these are best described as:

- a) *The corporate volunteer mostly drawn from the institutions in Canary Wharf and the City. These tend to offer one day with a team of volunteers tackling a single project.*
- b) *The organised volunteer, often school groups who will attach themselves to a particular ongoing project under the guidance of another outreach programme.*
- c) *Individual volunteering assisting in the playground and growing zone, helping with various children's activities and workshops.*

There is a range of work and projects that can be found all year round. However, it is important to ensure that specific projects do not exceed the capacity of the volunteer resource and that they see clear results from their efforts. Work should also be of an interesting and diverse nature.



In 2016 the Park benefited from the work of over 1500 corporate and community volunteers. Their accomplishments include the distribution of 80-100 tonnes of woodchips, the creation of woodland walks, development of children growing zones, and array of horticultural management. Through our local partner, East London Business Alliance, this very important asset to the Park has been made possible, which has proven to strengthen year on year. In addition to the labour contributed by the corporate volunteers, the Park also benefits from donations from this scheme which all goes towards the upkeep and maintenance of the Park. In the period 2015-16 the Park received in the region of £20,000 which was invested in planting, installation of natural seats, raised beds and towards supporting children's events.



Corporate Volunteers from East London Business Alliance, Winter 2017

11.5 Events

The policy of the Arts and Events Department is to foster community festivals to celebrate diversity and to encourage more small festivals and events and consider larger events as they come forward. The Council prides itself on being the “Festivals Borough”, with more festivals than any other part of London; many of these take place in our parks.

The Arts and Events team help support those wishing to organise events and have various resources which can be downloaded from the Council’s website

<http://www.towerhamletsarts.org.uk/?lang=e&s=38>

11.6 Summer Programme

The Parks Services have delivered small scale events together with various Ranger Time activities. The summer community based events were delivered as a part of the service’s Green Flag site (or potential Green Flag sites) community events calendar and were delivered in partnership with the Council’s Sport Development Team.



Park Life and Dog Fair, summer 2017



Window Box Making, summer 2017



Water Festival, summer 2017



A Day by the Seaside, summer 2017 (promoting Healthy Living)

12 Marketing and Publicity

The importance of marketing and publicity is to support the other themes, to help make people feel welcome, to promote community involvement, to promote sustainability, and to encourage exercise and healthy living.

12.1 Objectives

To promote, publicise and market to the right audience, the following objectives have been devised for the Mile End Park:

- ***Ensure that relevant information and interpretative materials appropriate to the site and its character are produced and distributed.***
- ***Activities and volunteer programme to be promoted to ensure all users and stakeholders have the opportunity to be involved in the Park.***

12.2 Press coverage

The public can access information about the Park and its users from the website and via social networks such as Facebook. There is a Mile End Park Facebook page. This could be developed further.

The Borough's website includes several public relations pieces about the Park. These can be found at <http://www.towerhamlets.gov.uk/>

12.3 Interpretation

Interpretative panels have been interspersed throughout the Park to allow the casual visitor to explore the full potential of the site. The panels inform and explain what is to be seen in the Park and how the Park contributes to the local history of both the area and its communities. The panels, whilst based in the Park also describe the local heritage of a wider geographic area. Heritage signs have also been introduced on a limited basis to give a flavour of the heritage of the site. These include information on the original Pleasure Garden, the King George V Playing Fields and the local history of the area.

The natural heritage as witnessed in the Park forms an integral aspect of the interpretation strategy. The panels cover basic information about biodiversity and local information about flora and fauna to look out for in the Park. Also included on the panels are more educational facts that link an aspect of the Park to the wider issue and so enhancing a Park visit, for example, the connection of global warming to the earlier hatching of butterflies and the use of early spring bulbs as a pollen source.

More transient, yet more immediate, signs are erected to inform of imminent works. The scale of the works dictates how much in advance the signs are erected. Similar signs inform visitors of activities in the Park, for example, holiday play schemes and up-and-coming events. In all cases these signs have a limited life and are removed promptly.

The Internet is a popular source of information, and therefore it is imperative that information available in the Park is also available to a web audience and the Parks website offers up to date information as well as this Management Plan.

Other panels offer information on healthy walks to be undertaken in the Park. These are headed 'Walk a Mile in Mile End Park' and were originally accompanied by swipe points intended to electronically measure distanced walked. It is believed that this was the first electronic measured mile in a public park anywhere in the world. Due to sustainability, funding and the lack of take up of the scheme, the Parks Team have decided to cease operation. However the panels have been left as they offer a map for the casual Park user to orientate themselves.

12.4 Signage

In the Park the cruciform monoliths (X signs) appear at most entrances. The signs are unique and are an immediate signifier that this is an entrance/exit point at Mile End Park. Their unusual design indicates that this is not a traditional Park and each sign has cut out lettering preventing defacing, and indicates the direction of main features. The cruciform monoliths have been specially treated in the paint mix to allow for the easy removal of graffiti without recourse to special chemicals or a sacrificial layer treatment. These were all repaired in 2015. A slogan on the sign welcomes new visitors whilst asking them to be kind to the Park and other Park visitors. Directional signs offer directions within the Park.

During summer of 2015 ten orientation signs were installed across the stretch of the Park. Although there was a need for signage identified from local users, this had been further reiterated by the Green Flag judges some years ago and therefore has been on the Park's wish list as priority. By identifying funds from Section106 it was finally possible to develop and install these signs.



The 'X' were installed across the Park during the Park's first phase of redevelopment in 2000. The signs were funded by the Millennium commission and act as orientation signs, as well as welcome sign.

12.5 Publicity in literature

Newspaper articles in the local, national and trade press maintain interest in the evolving Park project. They cover various aspects of the Park, encouraging the reader to see a variety of opportunities to the casual visitor. The consistent message to the reader is that the Park can offer something for everyone, and will reward a longer visit.

12.6 Publicity with local organisations

Within the Park itself and around the perimeter there are various community organisations with a strong relationship with the Mile End Park. The Parks Service has a close working relationship with local bodies such as the East London Tabernacle Baptist Church, the Mile End Climbing Wall, Revolution Karting, Concordia Community Organisation, Tower Project, and the Somali Integration Team. There are also various Council services based within the Park such as the Sports and Physical Activities Services, the Urban Adventure Base and the Animal Wardens, who all work in partnership to support each other's services.



Banner of key community events displayed across the borough, with Mile End Park's 'A Day by the Seaside' advertised on the 16th August 2017. The banner is displayed borough wide on railings, parks, events, and also displayed in Ideas Stores, and Children's Centres. The event attracted estimate 3000 attendees, predominantly children.

13 Implementing of Management Plan

This management plan is a vehicle for planning and monitoring how to deliver the aims and objectives of the park.

13.1 Objectives

To ensure it is well managed, the following objectives exist for Mile End Park:

- ***Manage and maintain the Green Flag Award standard***

13.2 Strategic Context

The management of the Park sits within a range of legislative, policy and strategic contexts, many of which have been described in the earlier sections of this Plan. The Council has a Strategic Plan representing the Council's contribution to delivering the borough-wide Community Plan, agreed by the Tower Hamlets Partnership and in particular making Tower Hamlets:

- ***a great place to live***
- ***a prosperous community***
- ***a safe and cohesive community***
- ***a healthy and supportive community.***

And furthering the aims of One Tower Hamlets – a more equal and cohesive borough with strong community leadership.

http://www.towerhamlets.gov.uk/lgnl/community_and_living/community_plan/strategic_plan.aspx

The Tower Hamlets Parks service is also governed by the priorities set out by Mayor John Biggs:

http://www.towerhamlets.gov.uk/lgnl/council_and_democracy/the_mayor_and_cabinet/the_mayor.aspx

The management of Park utilises the key criteria set out by Green Flag award to ensure effective management within its Parks and Open Spaces. This plan looks at each criterion and sets out what is done and the key aspirations of the Park. The management plan must be compatible with priorities set out by the London Borough of Tower Hamlets, as well the Service Plan for LBTH Parks and Open Spaces, the LBTH Community Plan, and the LBTH Safer Community Strategy.

The Management Plan is an evolving document reviewed annually; the current document generates an previous years Action Plan, together with 5 year aspiration plan (section 14 below).

13.3 Monitoring and reviewing the plan

Monitoring frequency varies according to activity - it can be daily, weekly, or less often, depending on the issue or the activity. General progress on the action plan will be monitored quarterly by the Parks Team.

A formal review of the progress of the Plan needs to be undertaken annually flowing from the monitoring processes. The Parks Team will review this plan with the Park aiming for the next review to take place before the end of 2017.

13.4 Performance Management

Managing and monitoring the performance of the Park is crucial to the Park's every day running, development and success. One of the most important drivers is the relationship the Parks Team has with the Green Team and its service providers. Ensuring visibility and Parks' presence from the Rangers is also paramount to monitoring and performance.

Below is a list of how performance is monitored:

- *Monthly walks with Green Team, to monitor standards of grounds maintenance*
- *Monthly walks with Veolia to monitor standards of cleaning*
- *Daily routine checks of play equipment's and ancillary items*
- *Daily patrols by the Community Park Rangers*
- *Monthly operational play inspections by senior officers*
- *Quarterly meetings and walks with the Friends Group*
- *Weekly walk by senior officers*
- *Regular programmed walk by the Council's Arboriculture and Tree Officer, and Biodiversity Officer*

From October 2016 onwards the service also aims to implement a new system of conducting play and operational checks via a new play inspection application using hand held tablet devices. This will provide a more effective, efficient and accurate way of recording information and addressing issues relating to play and general ancillaries within the Park.

13.5 Service Standards

In terms of service priorities, LBTH Parks and Open Spaces:

- *Strives to make all parks and open spaces within Tower Hamlets places where people feel safe, secure, and that visiting such green spaces is an enjoyable experience.*
- *Recognises the importance of parks and green spaces as major community assets.*
- *Fully recognises the importance and benefits of parks and open spaces as places for recreation, leisure and play for all communities within Tower Hamlets.*
- *Recognises the importance of the Borough's parks and open spaces and ensures that all of our wide-ranging communities and partners have equal opportunities to use them.*
- *Encourages the historical heritage of many of Tower Hamlets parks and open spaces and works closely with colleagues and partners alike to protect such cultural assets.*
- *Manages and maintains the Borough's parks and open spaces on behalf of the communities we serve.*

13.6 Design principles for Tower Hamlets Parks and Open Spaces

The key landscape design aims for all Tower Hamlets Parks and Open Spaces will inform any future developments in Mile End Park.

- ***Retain the open, green aspect of the Park***
- ***Retain and enhance the main desire lines but avoid criss-crossing the Park with paths***
- ***Enhance the public's feelings of security***
- ***Enhance nature conservation and biodiversity***
- ***Enhance and manage boundary and other planting***
- ***Provide public art features that increase the visual interest and identity of the site and involve the community***
- ***Enhance the attractiveness of the Park***
- ***Establish a positive site identity that is clear from within and outside the Park***
- ***Focus formal design and ensure that this sight line remains open for all time***

All **design** for the Park will be practical and appropriate for its purpose. It should reflect contemporary and reasonably foreseeable needs. It will be sympathetic to the local environment of Victorian and post war housing, and will, over time, seek to lift the quality of

the environment locally with appropriate innovations. Layout and detailed design will address issues of security and fear of crime and seek not to create areas in which crime might take place or in which particular groups could develop dominance of particular facilities. The largest feasible areas of grass should be retained and design should avoid breaking them up into small areas divided by paths.

Planting design, including choice of species, will take maintenance into account and seek not to increase the burden of costs overall. It shall comprise mostly native species and those that appeal to wildlife (including those providing winter nectar, berries and shelter). Some planting will be provided with more obvious ornamental and / or cultural appeal. The intention shall be to create as interesting and attractive an environment as feasible and to provide habitats for wildlife.

Materials will be in keeping with the feel of the Park, that is to say, simple, robust, durable and vandal-resistant. All materials shall have a low lifetime environmental impact and shall be specified in accordance with the sustainable purchasing policies within this document. Site furniture and railings shall be of classic, contemporary design (i.e. not Victorian or Edwardian) and be made of galvanised mild steel painted black.

Art will be used to help establish a clear site identity and will be developed by community involvement (especially of school children). It shall be mindful of security and the need to minimise maintenance.

Paving and so on will not be allowed to dominate the landscape, which shall remain substantially green in contrast to the surrounding environment. Paths shall be aligned to reflect the routes people want to use and to provide as stimulating an experience for Park users as possible.

Any future maintenance and “**backroom**” **facilities** will be screened from the Park users and designed for security.

Signage shall incorporate the Borough’s current Visual Identity Guidelines, identify who manages the site, give a contact telephone number, and provide guidance on facilities to found in the Park and on behaviour to be expected. Signs must welcome visitors to the Park and avoid lists of dos and don’ts. Signs will be clear for those with sight and language problems, replacing as many words as possible with graphic symbols.

14.1 Previous Year's Action Plan & Progress 2017-18

This has been organised in line with the Green Flag Criteria

Welcoming

Area	Objective	Who	Date of completion	Resources	Notes
AP	Design, develop and install picnic benches in the rear of the Arts Pavilion.	MR	30 Sept 2017	Corporate Challenge	There will be a series of seating installation across the park where needed. Completed.
EP	Second phase of the central reservation gapping across the park.	MR	September 2017	Funding currently being secured for this.	First phase of replanting of the central reservation was carried out in 2013/14. Completed.

Healthy, Safe and Secure

Area	Objective	Who	Date of completion	Resources	Notes
All	Ensure play areas are inspected daily, monthly and annually by Community Park and Play Rangers, Parks Officers and externally by qualified RPII inspectors.	PS/MR	Ongoing, daily, monthly, annually	Rangers	Implemented well and monitoring with progress. Completed and ongoing.
All	Risk Assessments for the Park, children's play area and any events in parks are reviewed annually.	PS/MR	Ongoing	Rangers Work with Events team regarding events.	These are being revised as necessary. Completed.
All	Effectively address ASB related issues.	PS/MR	Ongoing	Rangers	Increase partnership work with Tower Hamlets Enforcement Officers and Safer Neighbourhood Team. Gather intelligence of ASB and work with partner services to address issues.

					Completed and ongoing
PP	'Our Year in Bloom' initiative relating to the growing zone and cooking session. Deliver 6 related activities and create 'Our Year in Bloom' portfolio for users.	PS/MR	September 2017	Rangers	Completed This is related to the Tower Hamlets in Bloom, London in Bloom and the nationwide Britain in Bloom. Portfolio by 31.8.17
PP	Installation of bamboo fencing along the growing zone fencing.	MR	October 2017	Corporate Volunteers	Completed
PP	Explore avenues to install poly tunnels and a green house in the growing zone.	MR/PS	October 2017	Corporate Volunteers	This has been pushed back for the 2018-19 period due to funding.

Well Maintained and Clean

Area	Objective	Who	Date of completion	Resources	Notes
AP	Increase storage for the Arts Pavilion, by identifying suitable location and installing a container.	MR	31 March 2017	To be identified.	Completed This will assist the increasing use of the Arts Pavilion and storage to hold furniture has become demanding.
AP	Scoping exercise to overhaul the indoor lighting from halogen to LED lights.	MR/ KW	October 2017	To be identified	Ongoing
EP	Scoping exercise to overhaul the indoor lighting from halogen to LED lights.	MR/ KW	October 2017	To be identified	Ongoing
All	Monitor standards bi-weekly by the Parks Officers and the Green Team, standards include grass cutting, weeding, pruning and litter picking, and any failure is brought	MR / Green Team	Ongoing	Rangers feedback	Ongoing

	to the attention of the relevant service provider to remedy.				
--	--	--	--	--	--

Sustainable

Area	Objective	Who	Date of completion	Resources	Notes
AP & EP	Management of aquatic planting in the Ecology and Arts lakes, with a particular focus on reed reduction.	MR	March 2018	Corporate Volunteers/ Specialist Contractor	This has been pushed back for the 2018-19 period due to funding.
EP	Distribution of 100 tonnes of wood chips throughout the various woodland walk areas	MR	31 March 2018	Ushers Corporate Volunteers	completed
EP	Deliver ecology based workshops to 10 schools	MR/ PS	31 Dec 2017	Rangers	Completed

Conservation and Heritage

Area	Objective	Who	Date of completion	Resources	Notes
AP	Redesigning and restocking of Arts Park beds at the front and rear of the Arts Pavilion, in particular perennial plants to reduce maintenance and regular watering.	MR/ Green Team	30 April 2017	Corporate Volunteers	Completed
EP	Bulb planting of 100 meters naturalised bulbs – possible location King Georges Field.	MR	31 December 2017		Continuation of 10 year commitment to plant 50'000 each year for 10 years (2015 was the last year). Ongoing

All	Organise and deliver corporate volunteer challenge days to estimate of 1500 individuals.	MR	31 March 2018	Corporate Volunteers	Ongoing Work with ELBA through spring and summer 2017.
All	Investment of new DIY gardening tools for the use of corporate and community volunteers.	MR	Summer 2017	Corporate Challenge funding	Ongoing This objective has been taken from last year, with partial investment. Full completion to be expected for 2017 with funding security via corporate challenges.
EP	Undertake some trapping of invertebrates to compare with previous findings	MR	31 March 2018	Collaboration with LBTH Biodiversity Officer	Ongoing Conducted by Edward Milner (contracted Ecologist for park).
All	Ensure trees are surveyed on a annual basis.	MR/KW	31 March 2018	Collaboration with LBTH Trees Officer.	Ongoing The information to be recorded digitally on the Borough's geographic information system, using "Ezytreev" software.

Community Involvement

Area	Objective	Who	Date of completion	Resources	Notes
AP	Deliver 4 arts related free community events.	MR	31 Aug 2017	To be delivered with the Arts & Events Team.	Completed
PP	Delivering 15 Community and Children's events and activities, with increase in ecology and horticulture related events.	PS/ MR	September 2017	Rangers Victoria Park Team	Completed
PP	Delivery two play lead after school activity weekly. This will be piloted in the summer 2017, and will monitor effectiveness and impact of the sessions.	PS	September 2017	Rangers	Ongoing This will be delivered by the play team, with an aim to attract parents and children after school.

PP	Redesigning of the fire pit in the playground.	MR/PS	October 2017	Corporate Volunteers	Materials from the old fire pit were removed and the area is currently a blank canvas. The new design to incorporate children friendly furniture. <i>Pushed back to 2018-19 due to funding</i>
All	Amalgamation of Play and Ranger service to better utilise resources and skills to deliver a range of community led activities and events.	AB/SM	June 2017		<i>Completed</i>

Marketing and Publicity

Area	Objective	Who	Date of completion	Resources	Notes
AP	Work in Partnership with the London in Bloom to host the 50 th Anniversary of the London in Bloom Awards in the Arts Pavilion	MR	22 nd September 2017		<i>Completed</i> Planning meeting to be arranged to discuss format of the day and set up.

14.2 MEP 5 Year Aspiration Plan (2015 – 2020)

The 5 year aspirational plan below is drawn up for 2015 to 2020. Some of the objectives are continuous from previous years and due to its benefits and successes we hope to continue with these objectives, developing and increasing capacity where possible. This will continue to be reviewed annually, and additional objectives may be introduced whilst others may be amended or deleted.

Objective	Who	Date of completion	Notes	Progress
Welcoming				
Increase family friendly areas within the park, i.e. development of picnic areas with minimum one in each section of the park.	MR	Summer 2020	Corporate volunteers	Ongoing A new woodland walk area has been created in Copperfield Road, located south of the park and has proven very successful to date.
Healthy, Safe and Secure				
Improve security within the park by installing CCTV's cameras in all the 3 pavilions.	MR/PS/ KW	Jan 2017		Completed
Installation of street lights in identified areas within the Park in particular south of Park.	MR/KW	31 Dec 2020	Progressive, subject to funding	There are already been LED lighting installed over the Green Bridge, South Park and Haverfield Green.
Well Maintained and Clean				
Plant 500 metres of hedge along railings	MR	31 Dec 2020		100 metres have been planted with mixed hedgerows alongside Wennington Green.
Increase revenue by letting the empty unit in the Green Bridge to retailer.	MR	Achieved in early 2016	Completed, to be monitored	Completed Let out to company called Sugar Cube, which specialise in crepes and beverage.
Sustainable				
Pay and display management within Lawton Road Car Park and towards the end of Haverfield Road.	MR/KW	31 March 2020	There is one more area remaining	Completed in 2016 There are two areas of the parks where parking enforcement has been implemented.

Conservation and Heritage				
The park uses average 50-100 tonnes of woodchips for pathways and play areas. intend to create a barrier to section off where woodchips are dropped off to avoid spillage and also effective management and distribution of the woodchips. Over the course of five year we aim to distribute 300-500 tonnes of woodchips across woodland areas and natural pathways.	MR	Ongoing	Monitoring Corporate Volunteers	Completed Distributed approx.100 tonnes of woodchip in woodland walk areas during 2015-16. Have installed 40 of habitat piles across the park during 17-18. Aim to distribute a further 50 tonnes of woodchip in woodland walk areas and install additional habitat piles across the park.
Planting of additional 100,000 spring bulbs	MR	31 Dec 2020	Corporate Volunteer Schemes	Ongoing 50,000 have been planted manually so far with corporate voluneers. It is estimated that between 2005 and 2015 we have planted in the region of 950,000 bulbs in the Park. This continues on an annual basis.
Distribution of 100 tonnes of crushed concrete in Copperfield Woodland Walk and Haverfield Woodland Walk by April 2018. This will gradually replace any woodchip in woodland walk with aim to use crushed concrete on pathways permanently.	MR	April 2018	Corporate Volunteers	Ongoing 80 tonnes has already been distributed in both sites.
Community Involvement				
Develop the service by increasing opportunities for apprentices within the services. Accommodate one apprentice annually, and explore avenues for service related training and qualifications for the placements.	PS/ MR	31 Dec 2020		Ongoing Successfully accommodated 1 apprentice each year till 2020. Have accommodated apprentice each year since 2015.
Attract an average of 7500 corporate volunteers into the park over the 5 year period.	MR	31 Dec 2020	Maintain current levels	Ongoing Have accommodated estimate 4500 to date. Have been achieving average of 1500 per year on average.

Deliver 30 community events within the park delivery by the service.	MR/ PS	31 Dec 2020	15 events planned for 2017	Since 2015, averages of 5 large scale events have been delivered each year throughout the park.
Marketing and Publicity				
Installation of information and interpretation on signs, displaying additional horticultural, wildlife and historical information.	MR/KW	31 Dec 2020		Completed Installation to be completed by June 2017.
Revision of Mile End Park section on Council website.	Parks Team	April 2019	Due to staff resources this has been delayed.	This will include promotional material, park information, contact details, etc of the park.

Appendices

Appendix A1

List of outstanding scheduled activities from the New Year till end of financial year 2018

Date	Activity	Location
2018 Schedule of activities		
1st January Mon	Stay & Play (music, singing & soft play)	Mile End Children's Play Pavilion
2nd January Tues	Stay & Play (messy play)	Mile End Children's Play Pavilion
3rd January Wed	Stay & Play (arts & crafts)	Mile End Children's Play Pavilion
5th January Fri	Stay & Play (soft play & role play)	Mile End Children's Play Pavilion
8th January Mon	Stay & Play (music, singing & soft play)	Mile End Children's Play Pavilion
9th January Tues	Stay & Play (messy play)	Mile End Children's Play Pavilion
10th January Wed	Stay & Play (arts & crafts)	Mile End Children's Play Pavilion
12th January Fri	Stay & Play (soft play & role play)	Mile End Children's Play Pavilion
15th January Mon	Stay & Play (music, singing & soft play)	Mile End Children's Play Pavilion
16th January Tues	Stay & Play (messy play)	Mile End Children's Play Pavilion
17th January Wed	Stay & Play (arts & crafts)	Mile End Children's Play Pavilion
19th January Fri	Stay & Play (soft play & role play)	Mile End Children's Play Pavilion
22nd January Mon	Stay & Play ((music, singing & soft play)	Mile End Children's Play Pavilion
23rd January Tues	Stay & Play (messy play)	Mile End Children's Play Pavilion
24th January Wed	Stay & Play (arts & crafts)	Mile End Children's Play Pavilion
26th January Fri	Stay & Play (soft play & role play)	Mile End Children's Play Pavilion

29th January Mon	Stay & Play (music, singing & soft play)	Mile End Children's Play Pavilion
30th January Tues	Stay & Play (music, singing & soft play)	Mile End Children's Play Pavilion
31st January Wed	Stay & Play (arts & crafts)	Mile End Children's Play Pavilion
2nd February Fri	Stay & Play (soft play & role play)	Mile End Children's Play Pavilion
5th February Mon	Stay & Play (music, singing & soft play)	Mile End Children's Play Pavilion
6th February Tues	Stay & Play (messy play)	Mile End Children's Play Pavilion
7th February Wed	Stay & Play (arts & crafts)	Mile End Children's Play Pavilion
9th February Fri	Stay & Play (soft play & role play)	Mile End Children's Play Pavilion
12th February Mon	Stay & Play (music, singing & soft play)	Mile End Children's Play Pavilion
13th February Tues	Stay & Play (messy play)	Mile End Children's Play Pavilion
14th February Wed	Stay & Play (arts & crafts)	Mile End Children's Play Pavilion
15th February Thursday	Consultation event for families Bartlett Pk.	Mile End Children's Play Pavilion
16th February Fri	Stay & Play (soft play & role play)	Mile End Children's Play Pavilion
19th February Mon	Stay & Play (music, singing & soft play)	Mile End Children's Play Pavilion
20th February Tues	Stay & Play (messy play)	Mile End Children's Play Pavilion
21st February Wed	Stay & Play (arts & crafts)	Mile End Children's Play Pavilion
23rd February Fri	Stay & Play (soft play & role play)	Mile End Children's Play Pavilion
26th February Mon	Stay & Play (music, singing & soft play)	Mile End Children's Play Pavilion
27th February Tues	Stay & Play (messy play)	Mile End Children's Play Pavilion
28th February Wed	Stay & Play (arts & crafts)	Mile End Children's Play Pavilion
2nd March Fri	Stay & Play (soft play & role play)	Mile End Children's Play Pavilion
5th March Mon	Stay & Play (music, singing & soft play)	Mile End Children's Play Pavilion
6th March Tues	Stay & Play (messy play)	Mile End Children's Play Pavilion
7th March Wed	Stay & Play (arts & crafts)	Mile End Children's Play Pavilion

9th March Fri	Stay & Play (soft play & role play)	Mile End Children's Play Pavilion
12th March Mon	Stay & Play (music, singing & soft play)	Mile End Children's Play Pavilion
13th March Tues	Stay & Play (messy play)	Mile End Children's Play Pavilion
14th March Wed	Stay & Play (arts & crafts)	Mile End Children's Play Pavilion
16th March Fri	Stay & Play (soft play & role play)	Mile End Children's Play Pavilion
19th March Mon	Stay & Play (music, singing & soft play)	Mile End Children's Play Pavilion
20th March Tues	Stay & Play (messy play)	Mile End Children's Play Pavilion
21st March Wed	Stay & Play (arts & crafts)	Mile End Children's Play Pavilion
23rd March Fri	Stay & Play (soft play & role play)	Mile End Children's Play Pavilion
26th March Mon	Stay & Play (music, singing & soft play)	Mile End Children's Play Pavilion
27th March Tues	Stay & Play (messy play)	Mile End Children's Play Pavilion
28th March Wed	Stay & Play (arts & crafts)	Mile End Children's Play Pavilion
30th March Fri	Stay & Play (soft play & role play)	Mile End Children's Play Pavilion

Appendix A2 Table of content illustrating different events and activities and attendances

Date	Events / Activities	Total Number	Stay and Play	MEP Activity	Events MEP	Corp Vols
3rd Apr	Stay and play	100	100			
11th Apr	Easter Arts & Crafts	200		200		
Apr	World War 1	35				
16th Apr	Easter Egg Hunt	120		120		
19th Apr	Wild Flower Window Box	150		150		
10th Apr	Stay & Play	119	119			
17th Apr	Stay & Play	124	124			
24th Apr	Stay & Play	116	116			
1st May	Stay & Play	134	134			
4th May	Lloyds Corp Vols	55				55
5th May	Stay & Play	107	107			
8th May	Stay & Play	105	105			
12th May	XL Catlin Corp Vols	50				50
16th May	Stay & Play	117	117			
22nd May	Stay & Play	101	101			
29th May	Stay & Play	121	121			
30st May	Window Box Workshop	100		100		
31st May	Citi Corp Vols	100				100
6th June	Soc Gen Corp Vols	100				100
9th June	AON Corp Vols	77				77
10th June	Citi Corp Vols	50				50
12th June	Stay & Play	100	100			
13th June	Soc Gen Corp Vols	15				15
14th June	Soc Gen Corp Vols	15				15
15th June	Soc Gen Corp Vols	15				15
19th June	Stay & Play	120	120			
20th June	Morgan Stanley Corp Vols	100				100
26th June	Stay & Play	112	112			
28th June	Morgan Stanley Corp Vols	100				100
3rd Jul	Stay & Play	116	116			
7th Jul	JP Morgan Corp Vols	80				80
9th Jul	Park Life: Community Fair & Dog Show	314			314	
10th Jul	Stay & Play	108	108			
11th Jul	Soc Gen Corp Vols	20				20
14th Jul	HSBC Corp Vols	107				107

Date	Events / Activities	Total Number	Stay and Play	MEP Activity	Events MEP	Corp Vols
17th Jul	Stay & Play	113	113			
21st Jul	Alexia Memorial Event	60			60	
24th Jul	Stay & Play	105	105			
24th Jul	Arts & Crafts "Mask Making"	170		170		
28th Jul	Arts & Crafts "Make your own Summer Post Cards"	200		200		
29th Jul	S&P Global Corp Vols	20				20
30th Jul	Stay & Play	142	142			
2nd Aug	Water Festival	236			236	
7th Aug	Stay & Play	124	124			
7th Aug	Baking Session	131		131		
9th Aug	Lloyds Corp Vols	20				20
9th Aug	Cardboard City	40			40	
10th Aug	UBS Corp Vols	97				97
11th Aug	Ecology Workshop	113		113		
14th Aug	Stay & Play	100	100			
14th Aug	Bird Box Feeders & Boxes	180		180		
16th Aug	A day by the seaside	2,216			2,216	
17th Aug	Art Workshop	110		110		
21st Aug	Stay & Play	118	118			
21st Aug	Pizza making workshop	150		150		
23rd Aug	Sporting Carnival	1,700				
28th Aug	Stay & Play	127	127			
31st Aug	Clyde & Co Corp Vols	50				50
1st Sept	Arts & Crafts "Wind Chime"	80		80		
4th Sept	Stay & Play	112	112			
11th Sept	Stay & Play	110	110			
18th Sept	Stay & Play	112	112			

Date	Events / Activities	Total Number	Stay and Play	MEP Activity	Events MEP	Corp Vols
20th Sept	Soc Gen Corp Vols	30				30
25th Sept	Stay & Play	101	101			
26th Sept	Beazley Corp Vols	40				40
27th Sept	Expedia Corp Vols	130				130
22nd Sept	London in Bloom	300				
Sept	World War 1	45				
3rd Oct	Stay & Play	110	110			
6th Oct	UBS Corp Vols	40				40
9th Oct	Stay & Play	100	100			
16th Oct	Stay & Play	104	104			
24th Oct	Soup Day	113		113		
25th Oct	Teeny Halloweenie	316		316		
26th Oct	Winter Window Box	144		144		
27th Oct	Pumpkin Carving & Arts & Crafts	191		191		
30th Oct	Stay & Play	102	102			
6th Nov	Stay & Play	69	69			
13th Nov	Stay & Play	74	74			
15th Nov	ELBA Corp Vols	30				30
21st Nov	Nomura Corp Vols	15				15
Total Attendance		12,293	3,523	2,468	2,866	1,456
Events Total		81	31	14	5	24

Appendix A3 Events in Mile End Park 2018-19 – All events after summer holidays to be confirmed

Easter Holidays

30th March to 13th April 2018

Month/Date	Activity	Location	Time	Contact
End of March (date to be confirmed)	Arts and Crafts “Mother’s Day Card Making” Come and join the Park’s team for a creative adventure in arts and Crafts creating and designing your own Mother’s day Card. Bring your creativity, we’ll provide the materials! No need to book Email parks@towerhamlets.gov.uk	Mile End Children’s Park Locksley street E14 7EJ	12pm-3pm	Paul Sammut 02073644147
Easter period (date to be confirmed)	Easter arts and crafts Come and join the Park’s team for a creative adventure in arts and Crafts. Bring your creativity, we’ll provide the materials No need to book Email parks@towerhamlets.gov.uk	Mile End Children’s Park Locksley street E14 7EJ	12pm-3pm	Paul Sammut 02073644147
Easter period (date to be confirmed)	Easter Egg Hunt Egg hunting from 1pm to 3pm or until the last token is found. Search the sand pit for tokens which can be Exchanged for Easter Eggs. No need to book Email parks@towerhamlets.gov.uk	Mile End Children’s Park Locksley street E14 7EJ	1pm to 3pm	Paul Sammut 02073644147

Last week of April (date to be confirmed)	Wild Flower Window Box Come along and help green great Britain for wild life and create your very own wild flower window box, we 'll provide the materials Spaces are limited – To book a place please contact 02073644147 or email parks@towerhamlets.gov.uk	Mile End Children's Park Locksley street E14 7EJ	12pm-3pm	Paul Sammut 02073644147
May Half Term <i>28th May to 1st June 2018</i>				
Month/Date	Activity	Location	Time	Contact
Last week of May (date to be confirmed)	Window Box Workshop Bring your family along for a day of window box making. Make your very own Floral, Herbal or A Red Fruit (Tomato and Strawberry) Box. A lovely DIY family fun, home window decoration that you can take home and be proud of. Spaces are limited – To book a place please contact 02073644147 or email parks@towerhamlets.gov.uk	Mile End Children's Park Locksley street E14 7EJ	12pm-3pm	Paul Sammut 02073644147
Mid-June (date to be confirmed)	Arts and Crafts "Father's Day Card Making" Come and join the Park's team for a creative adventure in arts and Crafts creating and designing your own Father's day Card. Bring your creativity, we'll provide the materials No need to book email parks@towerhamlets.gov.uk for more information	Mile End Children's Park Locksley street E14 7EJ	12pm-3pm	Paul Sammut 02073644147

Start of Summer Holidays

24th July to 3rd September 2018

Month/Date	Activity	Location	Time	Contact
Early July (date to be confirmed)	<p>Park Life: Community Fair & Dog Show Organised by the Friends of Mile End Park, this is a great day out with all the family. Attractions include fair rides, craft workshops, children's activities, information stalls and, of course, a fun dog show! Most activities are free.</p>	Mile End Park, Event Field, by the Climbing Wall, Haverfield Road, E3	12pm-5pm	info@fomep.org.uk and www.fomep.org.uk
Last week of July (date to be confirmed)	<p>Arts and Crafts "Mask Making" Come and join the Park's team for a creative adventure in arts and Crafts. Bring your creativity, we'll provide the materials No need to book Email parks@towerhamlets.gov.uk</p>	Mile End Children's Park Locksley street E14 7EJ	12pm-3pm	Paul Sammut 02073644147
Last week of July (date to be confirmed)	<p>Arts and Crafts "Make your own Summer Post Cards!" Come and join the Park's team for a creative adventure in arts and Crafts. Bring your creativity, we'll provide the materials No need to book Email parks@towerhamlets.gov.uk</p>	Mile End Children's Park Locksley street E14 7EJ	12pm-3pm	Paul Sammut 02073644147
First week of August (date to be confirmed)	<p>Water Festival Come and join the park team for a Water Festival. Be prepared to get wet and bring a change of clothes. Some water guns will be provided but you can bring your own. Free for all ages. No need to book Email parks@towerhamlets.gov.uk</p>	Mile End Children's Park Locksley street E14 7EJ	12pm-3pm	Paul Sammut 02073644147

First week of August (date to be confirmed)	<p>Baking Session Come along and make some biscuits with us. Add some decorations and then you can either take them home or grab some yoghurt (not provided) and enjoy your park made biscuits in the sun. Book your little baker in for a 30 minute session. Four sessions with 6-8 children per session.</p> <p>Booking essential To book, email parks@towerhamlets.gov.uk</p>	Mile End Children's Park Locksley street E14 7EJ	12pm-3pm	Paul Sammut 02073644147
Second week of august (date to be confirmed)	<p>Cardboard City Come and help build Mile End Park's very own Cardboard city. You provide the imagination we provide the materials. Make your own den, house or castle- or any other building you like.</p> <p>No need to book email parks@towerhamlets.gov.uk</p>	Mile End Children's Park Locksley street E14 7EJ	12pm-3pm	Paul Sammut 02073644147
Second week of August (date to be confirmed)	<p>Ecology Workshop Come along and join the park rangers in a range of activity such as Pond Dipping, Sweep Netting and Bug Hunting.</p> <p>To book, email parks@towerhamlets.gov.uk</p>	Mile End Ecology Pavilion, Grove Road E3 5RP	12pm-3pm	Paul Sammut 02073644147
Mid-August (date to be confirmed)	<p>Bird Box Feeders & Boxes Come along and build your very own bird box or bird feeder that you can take home and hang in in your garden or balcony. We'll provide the materials.</p> <p>To book, email parks@towerhamlets.gov.uk</p>	Mile End Children's Park Locksley street E14 7EJ	12pm-3pm	Paul Sammut 02073644147
Mid-August (date to be confirmed)	<p>A Day By The Seaside Bring the seaside by the city! Attractions by the day will include Donkeys Rides, Arts and Crafts, Punch and Judy, Children's Rides, Sports, Sand and Water Play, Face Painting, Helter Shelter, Trampoline and much, much</p>	Mile End Park, Burdett Road E3	11pm-4pm	Paul Sammut 02073644147

	more! No need to book, Email parks@towerhamlets.gov.uk			
Third week of august (date to be confirmed)	Art Workshop Join us for a creative arts workshop! To book, email parks@towerhamlets.gov.uk	Mile End Arts Pavilion, Grove Road E3 4QY	12pm-3pm	Paul Sammut 02073644147
Last week of August (date to be confirmed)	Pizza Making Workshop Join us for a lovely day of pizza making. Book your little cook in for a 30 minutes session where our chefs will be getting messy rolling out dough, decorating and cooking some delicious little pizzas. Four sessions with 6-8 children per session. To book, email parks@towerhamlets.gov.uk	Mile End Children's Park Locksley street E14 7EJ	12pm-3pm	Paul Sammut 02073644147
Last week of August (date to be confirmed)	Ecology Workshop Come along and join the park rangers in a range of activity such as Pond Dipping, Sweep Netting and Bug Hunting. To book, email parks@towerhamlets.gov.uk	Mile End Ecology Pavilion, Grove Road E3 5RP	12pm-3pm	Paul Sammut 02073644147
First week of September (date to be confirmed)	Arts and Crafts "Make your own Wind Chime" Come and join the Park's team for a creative adventure in arts and Crafts. Bring your creativity, we'll provide the materials No need to book Email parks@towerhamlets.gov.uk	Mile End Children's Park Locksley street E14 7EJ	12pm-3pm	Paul Sammut 02073644147
First week of September (date to be confirmed)	Arts and Crafts "Make your own Beach Hut Wooden Photo Frame" Come and join the Park's team for a creative adventure in arts and Crafts. Bring your creativity, we'll provide the materials	Mile End Children's Park	12pm-3pm	Paul Sammut

	No need to book Email parks@towerhamlets.gov.uk for more information	Locksley street E14 7EJ		02073644147
<i>End Of Summer Holidays</i> <i>All events and activities from this time onwards to be confirmed</i>				
Month/Date	Activity	Location	Time	Contact
Mid October (date to be confirmed)	Arts And Crafts “Diwali Lantern Making” Come and join the Park’s team for a creative adventure in arts and Crafts creating your very own lantern to celebrate Diwali at its best! Bring your creativity, we’ll provide the materials No need to book Email parks@towerhamlets.gov.uk	Mile End Children’s Park Locksley street E14 7EJ	12pm-3pm	Paul Sammut 02073644147
Last week of October (date to be confirmed)	Soup Day Using fresh vegetables grown here in your very own garden, we’ll be brewing up the best soup around – YUM! With ingredients such as sweetcorn, pumpkin, butternut squash, leeks, potatoes, cabbage, broccoli and more you’ll be spoilt for choice! Spaces are limited – To book a place please contact 02073644147 or email parks@towerhamlets.gov.uk	Mile End Children’s Park Locksley street E14 7EJ	12pm-3pm	Paul Sammut 02073644147
Last week of October (date to be confirmed)	Teeny Weeny Halloweeny Come along in your best Halloween Costume and join us for some Arts & Crafts, Treasure Hunt, spooky fun and games with the staff of Mile End Park! No need to book Email parks@towerhamlets.gov.uk for more info	Mile End Children’s Park Locksley street E14 7EJ	12pm-3pm	Paul Sammut 02073644147

Last week of October (date to be confirmed)	<p>Winter Window Box Workshop Bring your family along for a day of winter window box making. Make your own floral window display with a choice of bulbs. DIY family fun creating a window decoration to take home. Spaces are limited – To book a place please contact 02073644147 or email parks@towerhamlets.gov.uk</p>	Mile End Children's Park Locksley street E14 7EJ	12pm-3pm	Paul Sammut 02073644147
Last week of October (date to be confirmed)	<p>Parks After Dark Join us in your scariest Halloween costume, for a spooky tour of Victoria and Mile End Parks. Spaces are limited – To book a place please contact 02073644147 or email parks@towerhamlets.gov.uk</p>	Mile End Ecology Pavilion, Grove Road E3 5RP	6pm-9pm	Paul Sammut 02073644147
First week of November 2018	<p>Autumnal Outdoor Cooking Day Come and roast your potatoes and marshmallows on an open fire with the help of the Park Rangers! Come along and have some fun in the great outdoors! We'll provide the materials. No need to book Email parks@towerhamlets.gov.uk</p>	Mile End Children's Park Locksley street E14 7EJ	12pm-3pm	Paul Sammut 02073644147
Mid December 2018	<p>Family Festive Day Come and join the Park staff for a Family Festive Day. Visit Santa's Grotto, join in some festive baking, create something lovely at the Arts and Crafts table No need to book Email parks@towerhamlets.gov.uk</p>	Mile End Children's Park Locksley street E14 7EJ	12pm-4pm	Paul Sammut 02073644147

Appendix B

Enabling Maps

Enabling Maps provide a pictorial step free map to amenities within the park.

A step-free route from Mile End Underground station to the Childrens Play Park. 1



This map takes you from Mile End Underground station to the Childrens Play Park. See back page for information about accessible facilities and bus routes.

The journey is around 440 metres long. It should take around 10 minutes to finish. If you have difficulty getting about, it could take 20 minutes.

Under each picture is a time-bar to show how much of the journey there is to go.
 = the length of travel for each part of the journey
 = the length of travel already completed



1 Turn left outside Mile End Station, the Green Bridge is in front of you. Cross over Eric Street.



2 At the corner turn left and use the pedestrian crossing to cross Burdett Road.



3 Turn left and walk down Burdett Road.

A step-free route from Mile End Underground station to the Art Pavilion. 1



This map takes you from Mile End Underground station to the Art Pavilion. See back page for information about accessible facilities and bus routes.

The journey is around 210 metres long. It should take around 5 minutes to finish. If you have difficulty getting about, it could take 10 minutes.

Under each picture is a time-bar to show how much of the journey there is to go.
 = the length of travel for each part of the journey
 = the length of travel already completed



1 Turn left outside Mile End Station, the Green Bridge is in front of you. Cross over Eric Street.



2 At the pedestrian crossing on the corner cross over Mile End Road to the 2nd island. Then turn right and cross Grove Road.



3 Turn right and go along Grove Road. Go past the bus stop and coin (20p) operated accessible toilet.

Appendix C1 Tower Hamlets Parka: Risk Assessment

Risk Assessment	Date Assessed / reviewed	Date due for next review	Reviewed / assessed by	Notes
Collecting, handling, transporting and disposal of syringes and other drug user waste	April 2017	April 2018		
Fertiliser application	April 2017	April 2018	reviewed by MT and GC	
Flower and Shrub bed maintenance	April 2017	April 2018	reviewed by MT and GC	
Generic assessment on the effects of terrain and weather	April 2017	April 2018		
Litter picking	April 2017	April 2018		
Lone working	April 2017	April 2018		
Maintenance of machinery and fitters activities	April 2017	April 2018		
Manual Handling	April 2017	April 2018		
Manual handling and stacking of produce / arisings	April 2017	April 2018		
Mobile work equipment, cutting grass and vegetation	April 2017	April 2018		
Operations adjacent to the highway	April 2017	April 2018	reviewed by KMT	
Pesticide application	April 2017	April 2018		
Planting	April 2017	April 2018		
Safe use of hand tools	April 2017	April 2018		
Shrub and Tree Pruning	April 2017	April 2018		
Unloading machinery	April 2017	April 2018	reviewed by MT and GC	
Use of clearing saws, brush cutters and trimmers	April 2017	April 2018		
Use of commercial and non-commercial vehicles	April 2017	April 2018		
Use of display screen equipment, including lap tops in any workplace	April 2017	April 2018		
Use of hand held hedge cutters	April 2017	April 2018		
Use of high pruners	April 2017	April 2018		
Use of ladders	April 2017	April 2018		
Use of leaf vacuums	April 2017	April 2018		

Use of pedestrian mowers	April 2017	April 2018
Use of rotovators, cultivators, scarifiers and rollers	April 2017	April 2018
Use of temporary work access platforms and staging	April 2017	April 2018
Use of trailers	April 2017	April 2018
Violence to staff	April 2017	April 2018
Weeding, cleaning and hand held cutting	April 2017	April 2018
Working at heights	April 2017	April 2018
Working in Offices	April 2017	April 2018

The above is a list an overall list of risk assessment reviewed by Green Team Management and Supervisors for Green Team gardeners. Individual risk assessments are assessed by management for staff and collectively reviewed

Appendix C2 Green Team Risk Assessment Form Sample

Activity/Task: Lone Working
Carried out: April 2018

To be reviewed: April 2019

Hazards	Risk Rating (High, Med, Low)	Controls
Trip or fall due to uneven terrain	Medium	<ul style="list-style-type: none"> • Visually assess terrain and decide if it safe for you to walk on. • Report any dangerous paths or surfaces to administrator/supervisor. • If terrain is judged to be dangerous find an alternate route. • HSE guide preventing slips and falls code ref INDG 225.
Injury caused by collision with vehicle/road infrastructure	Medium	<ul style="list-style-type: none"> • Follow the Highway Code • Possess clean driving licence. To be inspected by a supervisor every 6 months • Possess Council driving licence. • Ensure vehicle is road worthy by making a visual check. • Hse Driving at work code ref INDG 382.
Verbal assault from public or contractors	Medium	<ul style="list-style-type: none"> • Follow Council Codes of Practice. • Follow Council Policy Statements. • Carry Council issued mobile phone at all times when on duty. Do not use the phone whilst driving. • Assess situation and do not approach a situation you judge to be dangerous. Move away and when at a safe distance and/or hidden from view phone the compound or colleagues to report the situation. • Inform police as appropriate
Accident due to inclement weather	Medium	<ul style="list-style-type: none"> • Wear Council issued coat in cold/wet weather. • PPE regs code ref INDG 174 • Steel toecap boots or shoes must be worn at all times.
Accident whilst lone working	Medium	<ul style="list-style-type: none"> • Report in at the start and end of shift • Let colleagues know your whereabouts • Hse working alone code ref INDG 73.
Physical Assault from public or contractors	Low	As above
Personal stress	Low	<ul style="list-style-type: none"> • Talk to Supervisor. • Ring confidential help line on 0800 716619 for support
Accusation of inappropriate behaviour	Low	<ul style="list-style-type: none"> • Behave appropriately and respectfully with all members of the public. • Do not isolate oneself with children unless in emergency. • Carry/wear identification at all times.
People at risk: Employees Non employees		

SAFE SYSTEM OF WORK - Control Measures Required to Avoid or Minimise Risk	
1) Before Starting Work: Ensure your mobile phone is charged and that you have it with you	
2) Safe Working: Report any damaged or faulty equipment or PPE Report any incidents involving aggressive customers to your supervisor or a colleague. Report any incidents involving park users to your supervisor or a colleague	
3) Upon Completion: Report any problems to callout officer or supervisor	
Overall Task Residual Risk (High, Med or Low) After Implementing Control Measures Low	
Are the Risks Adequately Controlled	Yes / No
(If No This Activity <u>Must Not</u> Take Place)	
Assessor Name: Matthew Twohig Signature: _____ Date: April 2017 Date Communicated to Staff:	

RISK ASSESSMENT REVIEW	ADDITIONAL CONTROL MEASURES
Are Employees Complying: Yes / No	Staff to attend Dealing with aggressive behavior course.
Have Any New Hazards Been Identified: Yes / No	
Are the Risks Adequately Controlled: If No This Activity <u>Must Not</u> Take Place.	Yes / No
REVIEWED BY: Date:	Signature:
Date Communicated to Staff (if findings different):	

Contact Details

For any queries relating to the Management Plan please contact the author:

Mohammed Raja
Parks Development Officer (Community)

Arts, Parks & Events Services
Parks & Open Spaces
6th Floor Mulberry Town Hall
5 Clove Crescent
London E14 2BG

Tel: 020 7364 6108

mohammed.raja@towerhamlets.gov.uk

www.towerhamlets.gov.uk

This page is intentionally left blank

Appendix 3

2017-18 Budget Position at Period 9

The resources allocated for the management of the King George's Field Trust operations in 2017-18 is provided in the table breakdown below showing the expenditure and incoming resources. The planned projection is a net surplus of £56,618. There are no purposed commitments on the reserve for the current financial year. The projected surplus will be added to the reserve balance of £169,335.

The table below sets out the forecast outturn position

UNRESTRICTED FUNDS

	Budget £	Budget YTD £	2017/18		Forecast £	Forecast Variance £
			Actual YTD £	Variance YTD £		
INCOMING RESOURCES						
Rentals	639,000	479,250	508,617	29,367	639,000	
Other Lettings	189,000	189,000	238,466	49,466	226,000	37,000
Sponsorship & Donations	40,000	40,000	40,403	403	40,000	
Multi-Pitch Income	75,000	75,000	78,527	3,527	85,000	10,000
Other Income	130,000	121,250	109,741	11,509	135,000	5,000
Total Incoming Resources	1,073,000	904,500	975,754	71,254	1,125,000	52,000
RESOURCES EXPENDED						
Salaries	209,600	157,200	105,458	51,742	210,000	400
Employee Related Expenditure	5,600	2,100	3,479	1,379	6,850	1,250
Agency	107,000	80,250	93,941	13,691	110,000	3,000
Rent	75,900	56,925	151,658	94,733	75,900	
Repairs & Maintenance	443,957	330,043	363,659	33,616	456,600	12,643
Energy & Water	63,000	16,575	19,809	3,234	62,100	(900)
Other Services	130,800	73,350	72,248	1,102	118,800	(12,000)
Communications			225	225	225	225
Stock & Equipment	47,200	35,400	38,650	3,250	47,200	
Fees & Insurance	18,400	11,250		11,250	18,400	
Total Resources Expended	1,101,457	763,093	849,127	86,034	1,106,075	4,618
Net (Expenditure) /Income	28,457	141,407	126,627	14,780	18,925	56,618

Explanation of forecast variances £56,618 surplus

Income variance forecast £52,000 surplus

- Increase in lettings activity from the Arts and Ecology Pavilion

- Multi-Pitch Income from the Astro Turf at Stepney Green
- Additional one off contribution generated from filming income

Resources Expended variance forecast £4,618 underspend

- Additional staffing resources to support lettings
- Additional repairs and maintenance
- Other services costs

Conclusion

The service is projecting a surplus of £56,618 which will result in a total reserve balance of £225,953 to meet future commitments and investment into the Parks.

Appendix 4

Guidelines on applications for the installation of plaques, memorials, artworks and other structures in King Georges Fields Trust Land.

1. Introduction

1.1 Why we have developed this guidance and what it is for

The KGFT is occasionally approached with queries from individuals and organisations about placing plaques and structures in its parks and open spaces. In order to manage and deal with such requests in a fair and transparent way we have created these guidelines which provide both information for potential applicants and for staff processing these applications.

Memorials and public art can positively enhance the public realm. They can help us to reflect on and remember the lives and experiences of those who live or once lived in the borough, commemorate events of importance, provide reminders to the historical and social past or simply enhance an area and the aesthetic value people derive from it. They can also detract from the aesthetic of a natural environment in a built up area and contribute to a cluttering of parks and open spaces with too many structures and signage.

This document aims to

- provide guidance to anyone who is considering proposing the installation of a memorial, public art or structure;
- be explicit about the type and quality of proposals the KGFT is willing to consider
- guide the applicant through the application process

1.2 What kind of proposals are covered by this guidance

1.2.1 Standard Items –

Memorial Benches (has fee structure)

Applicants can apply for benches to be installed in parks in memory of loved ones. These will mainly be replacements for old benches, but additional benches in new locations may sometimes be considered. There may also be an opportunity to place a plaque on an existing bench.

Plaques are permitted on benches. Memorial plaques will be bought through the Council. The inscription on the plaque is to be restricted to “in the Memory of” the name of the person and dates of birth and death. Wording such as “beloved wife and mother of” will not be permitted. The engraved plaque will be fitted to the bench by the Council.

The Council will maintain memorial benches but accepts no replacement liability for the bench or the plaque at the end of its useful life.

The application form can be found [here](#)

Commemorative Trees (has fee structure)

Applicants can apply for trees to be planted in parks in memory of loved ones.

Locations for tree planting have been identified within certain parks with the borough and species have been selected that will enhance the park landscape and have sufficient room to grow and flourish. Alternative choices of species or location can be considered but planting can only take place where it fits in with the park development and maintenance plans. Plaques are not permitted on sponsored trees.

The Council will maintain sponsored trees. If the tree fails to thrive in the first 5 years, the Council will arrange for it to be replaced at no extra cost.

The sponsored tree application form can be found [here](#)

Ecological Enhancements (sponsorship negotiable)

Applicants can apply to sponsor ecological enhancements within certain parks within the borough. This could include bulb planting, meadow enhancement and upkeep of nature trails.

More information can be obtained by contacting the Parks Manager at parks@towerhamlets.gov.uk.

The Ecological Enhancement application form can be found [here](#)

1.2.2 Non Standard Items

Memorials

A monument intended to celebrate or honour the memory of a person or an event. These can be statues, fountains, mosaics, park structures, and plaques on walls

Public Art

These are works of art in any media that are planned with the intention of being sited in any open space and accessible to all. Such works may be site specific or new commissions created as part of wider development on new sites.

Park Structures

These could be structures such as gates and railings and other types of park infrastructure

2. Issues to bear in mind when applying – please see appendix 1 below

2.1 Planning Permission

Please bear in mind that, in addition to this application process, Tower Hamlets planning policies, contained in the Core Strategy (2010) development policies and supplementary planning documents and the local development framework will apply to all proposals for the development of artworks and memorials. Neighbourhood planning may also have a bearing on proposals.

2.2 Context

Research should be carried out before deciding to make a proposal to the Council to ensure the chosen site is appropriate. In the case of major memorials such as statues and monuments proposals must have a direct link to the site in which it is proposed to be placed and relevant information should be included within your application

Local People

Tower Hamlets is, and has been the home of many people who have had a profound impact on the local life or have an important connection with the local community.

Commemoration

Plaques and monuments may commemorate people, events or other local points of interest

Visual impact

Public art and well-designed memorials can positively contribute to the look and feel of places.

2.3 Quality

KGFT wants to ensure that any new artworks and memorials are of the highest quality and that they respect and enhance existing landscapes, streetscapes and enrich the vibrant and diverse feel of the borough. The quality of a proposal can be enhanced by commissioning

experienced artists and by using an experienced panel of people to carry out the selection process. Commissioning can be by open invitation or it can be by a direct commission where the artist has an established reputation for producing work appropriate to the proposal. We appreciate that different works suit different environments across the borough and we welcome proposals that capture the culture of Tower Hamlets through high quality art.

With some types of proposals such as a substantial memorial its always worth considering employing qualified architects and landscape architects as their professional guidance and judgement can greatly enhance a proposal.

As well as the aesthetic quality of the proposal, a judgement will be made on the quality and suitability of the materials to be used. Consideration of this will need to be given during the concept phase of the development of the proposal. Applicants will need to show that their chosen materials are sympathetic to the local area, appropriate for their location and durable and straightforward to maintain. There may be exceptions to this for proposals for short term, temporary installations.

2.4 Is an artwork or memorial the only option?

There are opportunities for a wide variety of temporary and permanent public art works in the borough. Apart from the obvious landmark buildings parks and open spaces there are also schools, colleges and medical facilities, sheltered housing and hostels, community centres, libraries, idea stores and sports centres, train stations and other transport structures. There are also a variety of media you could consider, lighting, mosaics, restoration of building facades and 2 dimensional artworks. Permission from the relevant landowners must be sought at all times.

Through consultation with officers representing KGFT it may become apparent that a particular site may require new gates, railings, water fountains or other park structures which may provide an alternative option.

Consideration could be given to partnering with a company or business who would like to sponsor the development and future maintenance of a memorial artwork or other park structures

2.5 Diversity

Tower Hamlets is a hugely diverse borough and we want to celebrate and recognise this. We are committed to being an inclusive borough which recognises shared values as well as the distinct needs of the

borough's different groups and communities, particularly the most vulnerable and disadvantaged. We welcome initiatives and proposals for artworks and memorials that recognise the variety of experiences and cultures the borough enjoys and that commemorate and celebrates people and events that have important connections to the local community.

2.6 The 20 Year principle

The death of a well-known or prominent person or a major event can lead people to want to commemorate almost immediately by erecting a memorial. This is an understandable reaction and in some cases the right thing to do; however, it could result in memorials of poor quality and ones that do not stand the test of time and therefore may in years come to feel inappropriate.

For these reasons our guidance is that there should be a pause of 20 years after the event or death of a person to allow time for reflection, planning and gaining support for a proposal. **Note that this principle does not apply to proposals for plaques, trees and park structures**

In the shorter term it may be appropriate to plan a temporary memorial such as a planting scheme in an existing garden

There may be exceptions to this principle which may mean it is appropriate to agree the siting of a memorial object sooner. Where there is a compelling reason for an exception to be made, and the proposer has gained wide public support and has met all other criteria outlined in this guidance, Officers will recommend consideration of the proposal to the KGFT Board with whom the final decision will rest.

2.7 Safety

Any proposal needs to consider safety and anti-social behaviour issues. An artwork placed in or near an area children play in will inevitably be climbed on. In some areas benches are used for street drinking and can also provide a focus of anti-social behaviour. Some statues and memorials can also become a focus of anti-social behaviour and graffiti because of the controversial nature of the person or event they portray.

Installations marking politicians or political events can also become the subjects of vandalism or demonstrations. Careful design and sensitive placing can help to reduce these risks. If the Council assesses that a

proposal poses unacceptable safety concerns or has the potential for attracting anti-social behaviour it may not be approved.

2.8 Support

If the applicant is not the landowner, proof will be needed to prove that the proposal has the full support of the owner. No proposals will be considered without proof of landowner support.

It will need to be demonstrated that engagement has taken place with the local people and organisations (where appropriate) support the proposal. The level of support would be proportionate to the impact of the proposal. For example, for a memorial planting, consultation with a local friends group may be sufficient but for a significant statue commemorating a person or an event, more substantial support will need to be proven, both from individuals and organisations with an interest in the proposal. As well as demonstrating support, applicants will also need to show that they have engaged all interested parties in an inclusive and open manner.

2.9 Temporary installations

KGFT will consider proposals for the temporary siting of statues, memorials and artworks. It may be that works of a temporary nature would be acceptable in areas where a permanent proposal would not. We would expect a temporary installation to meet the same criteria we use for assessing the merits of permanent proposal (for example quality and context). We will discuss a suitable length of time for a temporary proposal with the applicants, dependant on the site and the nature of the artwork.

3. Costs, maintenance and ownership

3.1 Sustainability

Where an artwork or monument is located in one of our parks, open spaces or the public realm, the KGFT Board will need to be satisfied by the arrangements for the future maintenance. Responsibility for maintenance and security can rest with any of a number of institutions. Artworks and monuments are currently maintained by Royal Historical Palaces, Tower Hamlets Council, English Heritage, the Greater London Authority, and in many instances by the freeholders of the site. Where several parties are involved it is prudent to record rights and responsibilities between them in a formal manner.

The KGFT Board will want to ensure that the development group or proposer can fund the entire project costs and that provision is made for the artwork, along with any associated landscaping, to be

maintained into perpetuity, and to the specification of the Board. This must include the continuing maintenance and repairs of the structure including such things as graffiti removal and cleaning of moss or lichens.

3.2 Costs

Landscaping can be expensive, particularly in cases where alterations to the highway are required. You will normally be required to enter into a legal agreement with the Council regarding these works.

Where it is proposed to gift a new artwork to the council, a one –off commuted sum payment may be required to cover future maintenance costs of the piece.

The cost of maintaining an artwork can be high, especially where a scheme involves additional or integral lighting or water systems, where the object requires specialist cleaning or where it is in a known area of anti-social behaviour where it could be susceptible to vandalism. The sum required for maintenance can therefore vary according to the complexity of the piece in question.

When developing a proposal consideration will need to be given to the following. It may be that legal advice will be needed on some of these issues.

- Origination, the cost of developing the concept.
- Consultation, developing your proposal in conjunction with local people and interested stakeholders.
- Fabrication, the cost of producing the concept
- Installation, the cost of delivery, site preparation, site safety and restoration after work is complete
- Project management, an experienced project manager may be required to provide advice
- Maintenance, how future maintenance will be paid for, the cost of insurance
- Ownership, moral rights and copyright, certainty on who owns the work and who has rights to reproduce the work

3.3 Decommissioning and moving

We reserve the right to decommission or move any memorial, artwork or park structure on our land. We will of course make every effort to contact the owner and/or artist to discuss the decommissioning. We cannot guarantee the location if we need to move the memorial or

artwork. Also, we cannot guarantee that we will be able to eventually move it back to the original location. This may be necessary because of the parks or highway improvement or realignment works.

4. The process

4.1 Timescale and procedure to be followed before applying for planning permission and other consents

Agreement to a particular project, finding an appropriate site, developing an acceptable design and securing the necessary finance can involve complex and involved lengthy negotiations, consultation and fund raising. It is important, therefore, that a realistic timescale is allowed for the project.

Experience has shown that a minimum period of a year should be allowed to develop an idea for a memorial, artwork or installation of a park structure to a stage at which it is appropriate to apply for planning and other permissions.

The Parks Officers should always be contacted for advice at an early stage and certainly before commissioning anyone to work up a particular concept for any site. The Parks Infrastructure Officer can be emailed on parks@towerhamlets.gov.uk or by telephone on 020 7364 7459 or 020 7364 2253.

After initial discussions with all interested parties, the principle of the proposal will be considered by the KGFT. Decision making meetings will be generally held quarterly to consider officer recommendations on any proposal agreed. If a proposal is felt to be significant (either in its nature or impact), then the views of experts in the field may also be sought. Officers will then advise the applicant if the proposal has been supported or refused and if supported, whether they will need to submit the proposal for planning permission and any other permissions and consents that may be required.

5. Guide for applicants – before developing your proposal

5.1 Have you reviewed the following?

Check the status of the park or open space in question and discussed with officers what kinds of development the Council might consider.

5.2 Contacts and links

Permission of the land owner

You will need to contact the Head of Arts, Parks and Events before starting to develop any kind of proposal.
Contact: Parks Infrastructure Officer at parks@towerhamlets.gov.uk or by telephone on 020 7364 7459 or 020 7364 2253.

New or temporary art commissions

Have there been discussions on your proposal with The Arts and Events team? More details can be found on the following link:
http://www.towerhamletsarts.org.uk/?guide=Events&page=events_categories

Planning permission

If planning permission is required have you had discussions with the planning service? There are cots attached to planning applications and you would be well advised to obtain permission in principal for a piece before applying for planning permission
http://www.towerhamlets.gov.uk/lgsi/451-500/485_planning_applications.aspx

Planning Policies

Check the Council's planning policies. Planning permission is likely to be required for the development of artworks, memorials and possibly the installation of any new park structures. You should refer to the relevant planning policies in the Local Plan and Managing Development Document Policies and Supplementary Guidance. Relevant polices can be found on the following links:

Local Plan (Core Strategy (2010)
http://www.towerhamlets.gov.uk/lgsi/451-500/494_planning_guidance/local_plan.aspx

Managing Development Document (MDD) 2013
<http://www.towerhamlets.gov.uk/idoc.ashx?docid=930fdc90-5ac8-46ae-b122-a41de2d9f7ae&version=-1>

Supplementary Guidance
http://www.towerhamlets.gov.uk/lgsi/451-500/494_planning_guidance/supplementary_guidance.aspx

Conservation Strategy
http://www.towerhamlets.gov.uk/lgnl/environment_and_planning/conservation.aspx

Tree Management

http://www.towerhamlets.gov.uk/lgsi/501-550/505_tree_management_preserva.aspx

You should contact the Tower Hamlets Planning Section at an early stage and before you submit a planning application to check whether planning permission is likely to be granted for your proposal

Tower Hamlets Council Website – Links

Tower Hamlets Planning
They include advice on specific planning policies

Arboriculture Services (The Tree Team) are responsible for managing trees on Council-owned land, and for tree maintenance and planting contracts undertaken for other services within the council, including housing estates and street properties, parks, education and social care sites and street trees

Planning portal – this is the national portal which gives access to advise on planning issues. It can also be used to submit and view planning applications

Departmental of Culture Medial and Sport- this Government department is responsible for ensuring that the historic environment of England is properly protected and conserved for the benefit of present and future generations

English Heritage – Has the responsibility for championing historic places and advises government and others how to get the best out of our heritage and protect future generations

6. Taking your proposal forward

6.1 Initial Considerations

Only after you have reviewed the issues above, and judged that your proposal seems to fit with the criteria in this guide, should you develop your proposal. It will need be detailed enough for the Council to fully understand what you are proposing and will need to include details of how the cost of the proposal is to be covered and how future management and maintenance costs will be met. Proposals that do not provide a sufficient level of detail will not be considered. We have developed an online application form to guide you through the process

6.2 Who gives consent that your proposal meets this guidance?

Assessment of your proposal will be coordinated by an officer who will also guide you through the process. They will also inform ward councillors if and when required about your proposal.

Your proposal will then be presented to an “Officer Panel” that meets on a quarterly basis to consider such requests. If the panel are satisfied with your proposal, they will report to the KGFT Board who will make the final decision.

In many cases you will then need to apply for planning permission and you must not commence work on your proposal until planning permission is granted. We will let you know if you need to apply for planning permission when we write to you with the outcome of your proposal. **You should note that agreeing your proposals meet our guidelines does not automatically mean that you will be granted planning permission.** The consent to your proposals is only on the basis that it meets the requirements we have set for that particular site, not that it meets planning policy.

If we refuse to give consent to your proposal there is no right to appeal. If the proposal is given consent by us, then refused planning permission, then you do have a statutory right to appeal against the refusal of planning permission. This following link shows you how to do this:

<http://www.towerhamlets.gov.uk/idoc.ashx?docid=bcf617ae-1c37-4a1a-ade5-7481fdc24583&version=-1>

6.3 Final stage

Once all permissions have been given you will need to contact The KGFT or its officers to agree the schedule of works for your proposal

7. Making your application

7.1 How to apply

Applications for permission can only be made on line via The Tower Hamlets Website. The on-line form will guide you through the application process and the information and documentation you will need to provide. Before you start using the form please make sure you have the following:

7.2 Document checklist

- A Plan of the site with the proposal location marked in red
- Drawings and images

- Letter of the site owner confirming consent to the proposal (if appropriate)
- Consultation feedback documents
- Any other relevant information as outlined in Appendix 1

Application Form

About this request

Please select the option that best describes this request

I am filling this form for someone else

I am filling this form for myself

About the applicant:

Type:

Charity

Limited Company

Individual

Limited Liability Partnership

Sole Trader

Other Organisation

Applicant

Forename

Surname

Organisation Name

Address

Tel No

Email Address:

Site Details:

We need to know the following details about the site

Enter the site postcode below to search for a Tower Hamlets address.

Alternatively you can type the details into the box below

Site address

Name of owner

Address of the owner

Owners Telephone

Owners email

The proposal

We need to know the following details about the proposal itself.

Give full details of what you are proposing including dimensions, materials and landscaping. Please also include drawings, sketches and photographs if these are available (you will be able to upload these at the end of this form)

Connection between the object and the site

Let us know why this object is particularly suited to this site

Memorial Objects

Is this proposal for a memorial object? Yes / No

If yes:

Name of the person or event being commemorated

Date the person being commemorated died or when the event happened:

Description of the person or event's connection with Tower Hamlets or Tower Hamlets communities

Temporary installation

Is this a temporary installation yes / no

Please let us know the length of time you would like the object to be in place and why

Future Works

Have you checked that the site in which you wish to install the object in will not be affected by work or development in the near future?

Yes / No

If yes

Please give details of the information sources you have checked

The Artist

Has the artist already been chosen?

Yes / No

If Yes:

Artist Name:

Examples of previous commission (you can also upload photographs at the end of this form

Please enter hyperlinks to any biographical information of images to previous works:

If No

Please give us details of commissioning process you will be undertaking

Consultation

Give details of the consultation methods used, including the number of bodies/people/households etc..mailed out or contacted, consultation methods used, dates of meetings etc..

Gives details of all feedback you received and how it changed your proposal (if appropriate)

Site ownership

Please give us the following details about the ownership of the proposed site. You will be asked to upload a copy of the letter from the site owner where their consent has been given for this proposal at the end of this form

Owner Name
Company Name
Address
Tel No

Funding

Please give details of the full cost of the proposal, broken down into phases from conception to installation

Give details of how the funding for this proposal has been secured

Give details of the estimated cost of future maintenance and how this will be guaranteed

Public Liability insurance

How much cover will be secure, what will be covered by the insurance and how will the payment of future premiums be guaranteed?

Upload documents

Please ensure you have included scanned or electronic copies of the following (where appropriate):

- Plan of the site with the proposed location marked in red
- Drawings
- Sketches
- Photographs
- Letter from the site owner where their consent has been given
- Consultation feedback documents

Appendix 1

Applicants should ensure their proposal meets all the relevant criteria – see table below

Type of Structure	Planning	Quality	Link to site	Safety	Consent of Landowner	Public support/consultation	Future Maintenance Cost	Street works Licence if on highways	
Large Monuments/Artworks	√	√	√	√	√	√	√	√	
Sculptures, Statues	√	√	√	√	√	√	√	√	
Temporary Art Installation	√	√		√	√			√	
Parks Infrastructure e.g. walls and gates	√	√		√	√	√			
Benches		√		√	√			√	
Trees		√		√	√			√	
Shrubs		√		√	√				
Memorial Plaques on Benches		√	√	√	√		√	√	
Plaques of Public Figures	√	√	√	√	√	√	√		

This page is intentionally left blank

Appendix 5

Outcomes of 2017 -18 objectives Mile End Park

1. 2017 introduces a “Stepping Up” theme with the aim of going the extra mile in terms of community participation, improvement of play facilities and the way we monitor the Park. In addition, in 2017 we aim to:
Bring the Rangers’ service to the 21st century with technology to help monitor the Park.
Introduce innovative ways of reporting and providing feedback by users, via use of QR codes.

The QR codes are located in all Mile End Park orientation signs, located cross the Park. The QR provides a link to information relating to the park and the service generally, with also information about the By Laws. The QR codes also provide an opportunity for residents and users to provide feedback.

2. Increase the education and curriculum based activities for children and the wider community, specifically related to arts, ecology, play and history.

There have been dedicated programmes and activities last year, and this includes:

Ecology:

- Ecology sessions for schools and families
- Dedicated forest school areas for local schools to deliver ecology based sessions. These have been supported by the rangers.
- Bird feeding activities
- Cooking sessions
- Window box making
- Harvesting vegetables / Vegetable / fruit growing.
- Bulb planting

Arts:

- Various arts and crafts activities
- Card board city

Play:

- All events, activities and programme have element of play and there have been an estimate of 18 activities and 6 large family events.
- Total attendance over all activities and events have been estimate 5,500. Please note this is for financial year 2017-18 (with a few months left or year to end).
- New play equipment's
- New scouts group taking place in the playground (rangers deliver horticultural sessions where required, bulb planting and arts and crafts etc)

History:

- Roman beds in the growing zone – delivered by rangers.

3. Develop financial sustainability, with new introduction of pay and display car parks and increasing the involvement of corporate volunteers.

Could not increase corp volunteers, due to delivery of children's activities and sessions. However we increased in taking large numbers in single days which provides more productivity in work.

- Increase the amount of accessible and inclusive play equipment.
- 4 Increase partnership work with Tower Hamlets Enforcement Officers and Safer Neighbourhood Team to address ASB related issues.
 - Currently attend the ASB Group Meetings.
 - Continuously liaise with the Street Population Team, Enforcement Officers and the DIP Team to address, ASB, rough sleeping and drug issues in park, particularly during the summer time. Sharing of knowledge with the SNT's with issues in the park.
 - 5 Amalgamation of Play and Ranger service to better utilise resources and skills to deliver a wider and cohesive range of community led activities and events.
 - The experience of play workers contribute to play offer by the service, with an increased variety of programmed play activities and events.
 - Sharing of resources, experience and skills amongst the two teams to focus more towards community engagement.
 - Have introduced a new tasking sheet is now to ensure a community engagement plan, monitoring and inspection are carried out throughout the park, in particular for delivering activities and events during the summer and school terms.
 - Additional ranger resources has allowed us to facilitate more 100+ corporate volunteers. We have had more 100+ corporate volunteers in one given day then previously due to the larger team.
 - Wider team allows us to concentrate on borough wide visit and monitoring.